



The details that count!

We are attentive to every conversation, every comma and every need. Just as with our products, it is the details that count!





ARKELO

LYKKE WORKPLACE LAMP9
IRIS POWER-HUB 14

POWERDOT

POWERDOT FAMILY.....18
POWERDOT STANDARD.....20
POWERDOT FRAMES & COVERS Ø 79 MM.....21
POWERDOT FOR THE MEETING ROOM.....21
POWERDOT MIDI Ø 60 MM22
POWERDOT MINI Ø 51 MM24
POWERDOT MICRO Ø 30 MM26

POWER & DATA

AXESSLINE DESK MODEL29
ECODESK - EASY ACCESS TO OUTLETS29
AXESSLINE POPUP.....29
AXESSLINE QUICKBOX.....30
AXESSLINE QUICKBOX FOR MEETING ROOMS30

FOR CONFERENCE- & MEETING ROOM

AXESSLINE CONFERENCE KITS.....33
POWERDOT FOR CONFERENCE.....34
TERMINAL STRIPS & COVERS.....36

MAKE EVERYDAY LIFE EASIER

OCHNO SYSTEM38
WIRELESS CHARGING40

CABLE MANAGEMENT

TRAYS & TERMINAL STRIPS.....44
READY MADE CABLE-KITS.....46
CABLE MANAGEMENT CLIPS / CABLE SNAKE / CABLE SOCKS48
CABLE THROUGHES50
TERMINAL STRIPS & COVERS FOR THE WORKPLACE51

LIGHTING

WORKDESK LAMPS52
MEET LYKKE54

TOOLBAR CONCEPTUM

DO MORE WITH LESS.....56
CONCEPTUM FOR DESK SCREEN.....58
CONCEPTUM STAND-ALONE.....60
CONCEPTUM STORAGE.....62
CONCEPTUM MONITOR ARMS.....63
CONCEPTUM LIGHTING.....63

MONITOR ARMS

WHY SHOULD I INVEST IN A MONITOR ARM?64
SYSTEM OSLO MONITOR ARMS.....66
SYSTEM STOCKHOLM MONITOR ARMS68

COMPUTER HOLDERS

NEW WAYS OF WORKING WITH NEW TECHNOLOGY70
LAPTOP HOLDERS73
LIFTSYSTEM - A UNIQUE CONCEPT74
COMPUTER HOLDERS & WORK STATION76

ERGONOMI

WORKPLACE MAT & FOOT SUPPORT78
JOCKEY SADDLECHAIR78
ERGONOMIC HUMAN INTERFACE80
ERGONOMIC SUPPORT81

STORAGE

FILE EXPANSION / PEN- & GADGET BOX.....82



ArKelo

ArKelo is the name we have given to our range of products inspired by traditional Scandinavian design. ArKelo is where innovation, design and function meet.

Lykke

You can now have Scandinavian light at every work station. Lykke is a metre-long LED luminaire that combines serious aesthetics with innovative functionality. Behind the slimmed-down design is a powerful lighting solution with intuitive controls that deliver everything from warm atmospheric lighting to the sharp light of a laboratory.

Lykke was born from a desire to create beautiful simple lighting for modern offices. It is designed to perform the function that ceiling luminaires and traditional desk lamps used to, but in an innovative way. What it does is distribute light uniformly across

“Lykke is integrated into your work station and always delivers exactly the kind of light you require”

the entire work area, freeing up desk space at the same time as being easy to adjust.

“The light from ceiling luminaires suspended above work stations can be good or bad depending on the position of the desks. Lykke is integrated into your work station and always delivers exactly the kind of light you require,” says Fredrik Carlstedt of Kondator.

Development of Lykke was started in 2018 with the aim of refining the aesthetic design while still retaining excellent functionality. The luminaire is fixed to the desk and sits on an articulated arm that can be turned in all directions. Lykke also has a touch panel for adjusting the light temperature and luminosity.



A close-up photograph of the Lykke desk lamp's control bar. The bar is white and features a power button on the left, a horizontal slider in the center, and a brightness button on the right. The background is a blurred image of red berries.

ARKELO 001: LYKKE

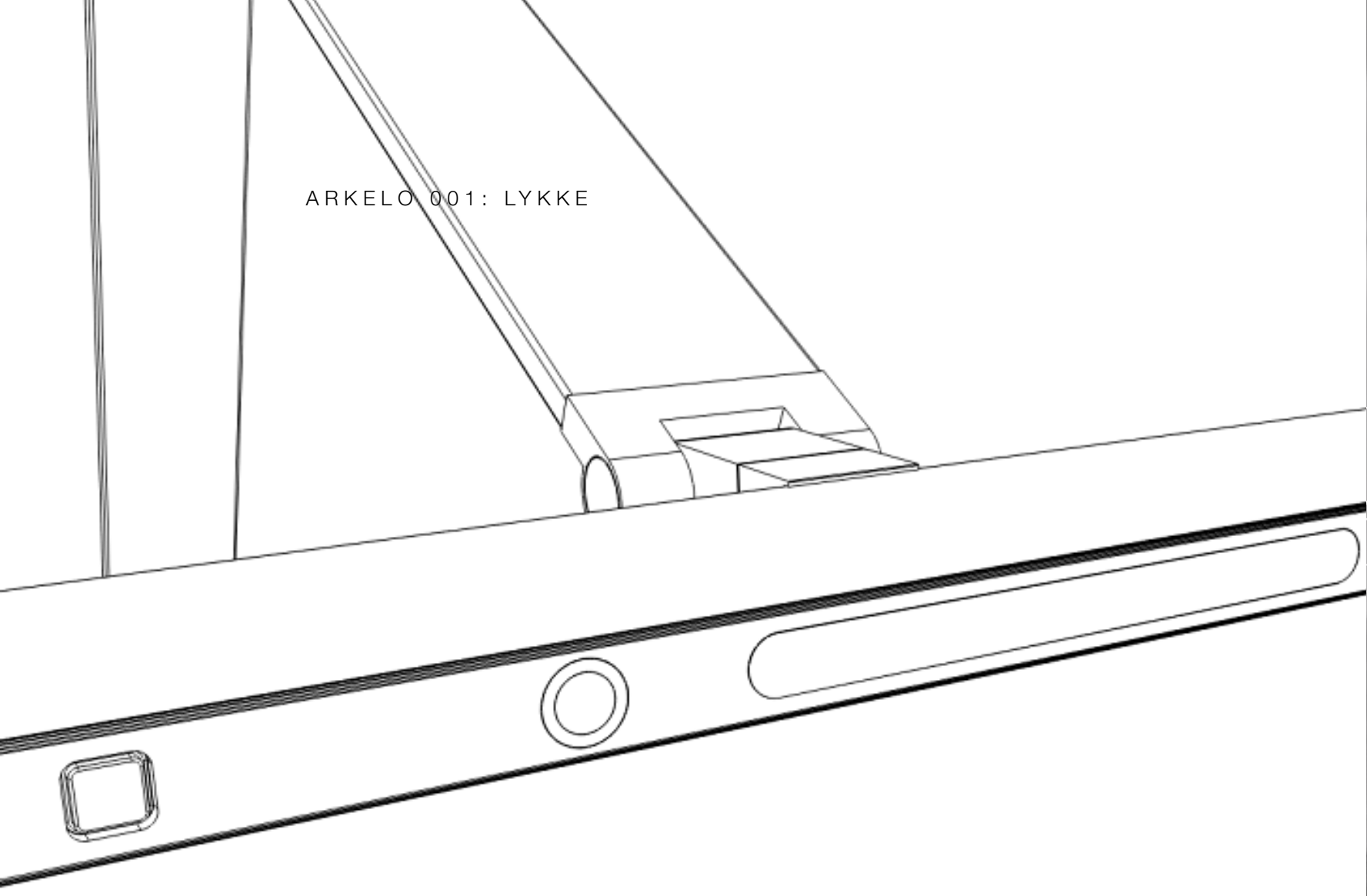
“Lykke enhances your desk. It is both beautiful in itself and brightens up what you need to see in your work,” says Amelie Saltin Thor, product developer at Kondator.

Based on a matrix comprising hundreds of LED dots, Lykke is a lighting option with several sustainable features. Thanks to a sensor, it switches itself off when the work area has been unused for 15 minutes, the LED technology is energy-efficient, and Lykke also benefits businesses financially, as there is no need to purchase or move ceiling luminaires in the event of relocation or refurbishments.

“Thanks to a sensor, it switches itself off when the work area has been unused for 15 minutes”

As the first product in Kondator's ArKelo series, Lykke is the perfect expression of the ArKelo vision, where all products combine aesthetic appeal, technology and innovation.

“With Lykke and ArKelo we are looking to challenge and develop the way in which we equip offices in the future. We want to make people's day-to-day lives easier through innovative solutions that are also beautiful to look at,” says Erik Westerlund, CEO of Kondator.



ARKELO 001: LYKKE

Part no 810-L10W



Part no 810-L10B



SPECIFICATION

1 METER BRIGHT LIGHT

PRODUCT DATA

- 1500 Lux 400 mm 750 Lux 650 mm 550 Lux 800 mm
- 2450 Lumen (6500 K, from lightsource)
- 100 Lumen / W (6500 K, from lightsource)
- 3000 / 4000 / 6000 Kelvin
- UGR: <17 (Unified Glare Rating)
- CRI 93 Ra Colour rendering
- PIR (Passive Infrared sensor)
- 220-240V, DC 24V 1.5A (24W), Max 36W

CABLES

- 1 x 0.8 m integrated DC cable
- 1 x 1.8 m DC adapter (Europlug)





Iris

Iris has been created in a design partnership between Kondator and the Tengbom firm of architects.

Iris is a power hub designed to make power easily accessible in conference rooms, under work stations and in public areas. Accommodated in a housing made of recycled PET, Iris is our first product where environmental awareness has played a major role in the choice of material.

With its refined design and excellent functionality, it stands to reason that Iris comes under our ArKelo brand, where products combine aesthetic appeal, technology and innovation.

“Why have a common power strip hidden behind a piece of furniture?”



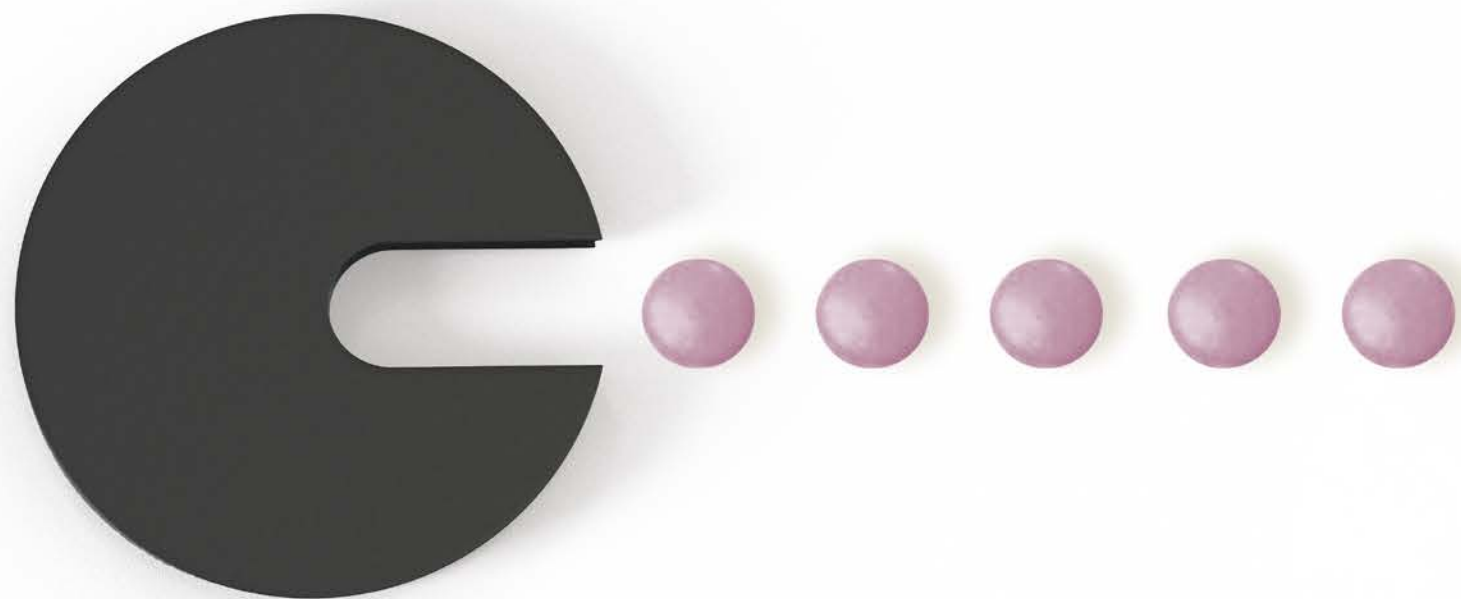
Iris



SPECIFICATIONS

Max voltage	250 V 50 Hz
Max electric current	16 A
Number of outlets	4 × CEE 7/7
Number of USB	2 × USB-A
USB charger	5 V max 2.4 A
Protection Overheating	Yes
Grounded	Yes
Connection cable length	3 m
Max load	3680 W
Color	Light grey or Camel
Cable connection	Schuko / Type F (CEE 7/4)
Certification	CE, GS





WELCOME TO THE POWERDOT FAMILY

Powerdot gives you proximity to electricity, data and media wherever you want it. Everything in the vicinity of your desk. Available in a number of different plug types and certified according to European standards. Here you will find an assortment that meets every need.

POWER
dot



POWERDOT STANDARD

Available in 22 different variants.
Diameter 83 mm. Bore diameter 79 mm.



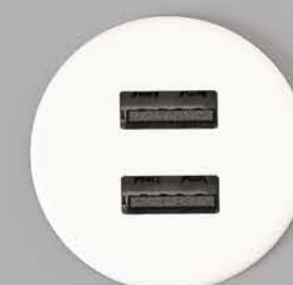
POWERDOT MIDI

Available in 8 different variants. Diameter 65 mm.
Bore diameter 60 mm.



POWERDOT MINI

Available in 4 different variants.
Diameter 55 mm. Bore diameter 51 mm.



POWERDOT MICRO

Available in 18 different variants.
Diameter/width 35 mm.
Bore diameter 30 mm.

SCALE 1:1

POWERDOT STANDARD

A UNIQUE CONCEPT FOR ELECTRICITY, DATA AND MEDIA WHERE YOU WANT IT!



935-PD10W POWERDOT SATELLITE, WHITE
1 POWER, 4 X CABLE-THROUGH
FIXED LEVEL. HEIGHT 45 MM.

935-PD10 POWERDOT SATELLITE, BLACK
1 POWER, 4 X CABLE-THROUGH
FIXED LEVEL. HEIGHT 45 MM.

935-PD11W POWERDOT SATELLITE, WHITE
1 POWER, 4 X CABLE-THROUGH
VERTICALLY MOVABLE IN 3 POSITIONS.
HEIGHT 89 MM.

935-PD11 POWERDOT SATELLITE, BLACK
1 POWER, 4 X CABLE-THROUGH
VERTICALLY MOVABLE IN 3 POSITIONS.
HEIGHT 89 MM.

935-PD12W POWERDOT SATELLITE, WHITE
1 POWER, 1 DATA, 1 USB-CHARGER
VERTICALLY MOVABLE IN 3 POSITIONS.
HEIGHT 89 MM.

935-PD12 POWERDOT SATELLITE, BLACK
1 POWER, 1 DATA, 1 USB-CHARGER
VERTICALLY MOVABLE IN 3 POSITIONS.
HEIGHT 89 MM.

935-PD13W POWERDOT SATELLITE, WHITE
1 POWER, 1 HDMI, 1 USB-PORT
VERTICALLY MOVABLE IN 3 POSITIONS.
HEIGHT 89 MM.

935-PD13 POWERDOT SATELLITE, BLACK
1 POWER, 1 HDMI, 1 USB-PORT
VERTICALLY MOVABLE IN 3 POSITIONS.
HEIGHT 89 MM.

935-PD14W POWERDOT SATELLITE, WHITE
1 POWER, 2 USB-CHARGER
(2.1 A, TOT)
VERTICALLY MOVABLE IN 3 POSITIONS.
HEIGHT 89 MM.

935-PD14 POWERDOT SATELLITE, BLACK
1 POWER, 2 USB-CHARGER
(2.1 A, TOT)
VERTICALLY MOVABLE IN 3 POSITIONS.
HEIGHT 89 MM.

935-PD16W POWERDOT SATELLITE, WHITE
1 POWER, 1 USB-CHARGER
1 USB-C PORT, 2 CABLE-THROUGH
VERTICALLY MOVABLE IN 2 POSITIONS.
HEIGHT 74 MM.

935-PD16 POWERDOT SATELLITE, BLACK
1 POWER, 1 USB-CHARGER
1 USB-C PORT, 2 CABLE-THROUGH
VERTICALLY MOVABLE IN 2 POSITIONS.
HEIGHT 74 MM.

POWERDOT AVAILABLE IN SPECIFIC COUNTRY STANDARDS

935-PD20 POWERDOT SATELLITE, BLACK
1 POWER **(ENGLISH)**,
4 CABLE-THROUGH
FIXED LEVEL. HEIGHT 45 MM.

935-PD22 POWERDOT SATELLITE, BLACK
1 POWER **(ENGLISH)**, 1 DATA,
1 USB-CHARGER
VERTICALLY MOVABLE IN 3 POSITIONS.
HEIGHT 89 MM.

935-PD56 POWERDOT SATELLITE, BLACK
935-PD56 POWERDOT SATELLITE, WHITE
1 POWER **(SWITZERLAND)**
1 USB-CHARGER
1 USB-C PORT, 2 FEED-THROUGHS

935-PD30 POWERDOT SATELLITE, BLACK
935-PD30W POWERDOT SATELLITE, WHITE
1 POWER **(FRENCH)**,
4 CABLE PORT

935-PD32 POWERDOT SATELLITE, BLACK
935-PD32W POWERDOT SATELLIT, WHITE
1 POWER **(FRENCH)**, 1 DATA,
1 USB-CHARGER

935-PD34 POWERDOT SATELLITE, BLACK
935-PD34W POWERDOT SATELLITE, WHITE
1 POWER **(FRENCH)**,
2 CABLE-THROUGH,
2 USB-CHARGER

935-PD36 POWERDOT SATELLITE, BLACK
935-PD36W POWERDOT SATELLITE, WHITE
1 POWER **(FRENCH)**
1 USB-CHARGER
1 USB-C PORT, 2 CABLE-THROUGH

935-PD40 POWERDOT SATELLITE, BLACK
1 POWER **(DANISH)**,
4 CABLE PORT

935-PD42 POWERDOT SATELLITE, BLACK
1 POWER **(DANISH)**, 1 DATA,
1 USB-CHARGER

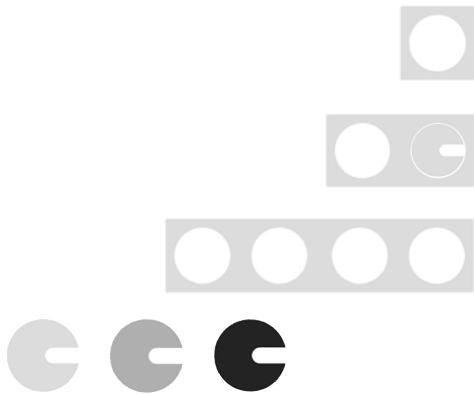
935-PD46 POWERDOT SATELLITE, BLACK
935-PD46W POWERDOT SATELLITE, WHITE
1 POWER **(DANISH)**
1 USB-CHARGER
1 USB-C PORT, 2 CABLE-THROUGH

CREATE THE RIGHT FEELING

Aesthetically appealing details make a big difference.
Covers and frames are made of metal.

POWERDOT FRAMES & COVERS Ø 79 MM

- 935-PF01W** METAL FRAME, FOR 1 POWERDOT, WHITE
- 935-PF01** METAL FRAME, FOR 1 POWERDOT, SILVER
- 935-PF01B** METAL FRAME, FOR 1 POWERDOT, BLACK
- 935-PF02W** METAL FRAME, FOR 2 POWERDOT, WHITE
- 935-PF02** METAL FRAME, FOR 2 POWERDOT, SILVER
- 935-PF02B** METAL FRAME, FOR 2 POWERDOT, BLACK
- 935-PF04W** METAL FRAME, FOR 4 POWERDOT, WHITE
- 935-PF04** METAL FRAME, FOR 4 POWERDOT, SILVER
- 935-PF04B** METAL FRAME, FOR 4 POWERDOT, BLACK
- 935-PFCW** METAL COVER, WHITE
- 935-PFCS** METAL COVER, SILVER
- 935-PFCB** METAL COVER, BLACK



Do you have an existing hole in the table?
See Powerdot cable-throughs page 50

BUILD HOWEVER YOU WANT

Multiple workers in the same room? Choose our 2 or 5-piece package offer.
The Powerdot fits perfectly to the table top - and if the table has an integrated lid,
then the tray is easily mounted underneath. See complete packages under the
Conference chapter.

FOR 2 POWERDOTS

POWERDOT TRAY

Mount with TC30 cover and adapted tray
for 2 Powerdots.

- 935-TP02W** POWERDOT TRAY, WHITE
- 935-TP02** POWERDOT TRAY, SILVER
- 935-TP02B** POWERDOT TRAY, BLACK
DIMENSION 420 x 220 x 64 MM

POWERDOT BAG

Collect the cables under the table.

- 935-TP23** POWERDOT BAG, BLACK TEXTILE
MÅTT 364 x 190 x 400 MM
- 935-TPP2** POWERDOT FRAME, FOR MOUNTING OF
TEXTILE BAG (TP23) WITHOUT TRAY
INCL. POWERDOT BAG (935-TP23)

FOR 5 POWERDOTS

POWERDOT TRAY

Mount with TC60 cover and adapted tray
for 5 Powerdots.

- 935-TP05W** POWERDOT TRAY, WHITE
- 935-TP05** POWERDOT TRAY, SILVER
- 935-TP05B** POWERDOT TRAY, BLACK
DIMENSION 720 x 220 x 64 MM

POWERDOT BAG

Collect the cables under the table.

- 935-TP56** POWERDOT BAG, BLACK TEXTILE
DIMENSION 664 x 190 x 400 MM
- 935-TPP5** POWERDOT FRAME, FOR MOUNTING OF
TEXTILE BAG (TP56) WITHOUT TRAY
INCL. POWERDOT BAG (935-TP56)



POWERDOT **MIDI** Ø 60 MM

Ø60



FLUSH MOUNTED **POWER & CABLE-THROUGHS**
Powerdot midi can easily be top-mounted in a 60 mm hole, or alternatively, flush with the table top.

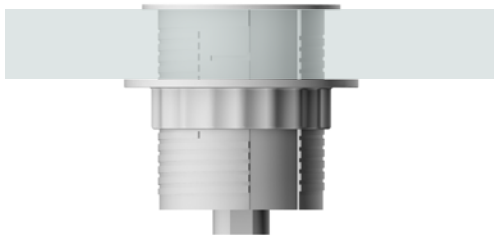
POWERDOT **MIDI** Ø 60 MM



935-PM60W POWERDOT MIDI, WHITE
1 POWER, 1 CABLE-THROUGH WITH CLIPS
1.7 M CONNECTION (SCHUKO)
FIXED LEVEL, HEIGHT 82 MM.



935-PM60 POWERDOT MIDI, BLACK
1 POWER, 1 CABLE-THROUGH WITH CLIPS
1.7 M CONNECTION (SCHUKO)
FIXED LEVEL, HEIGHT 82 MM.



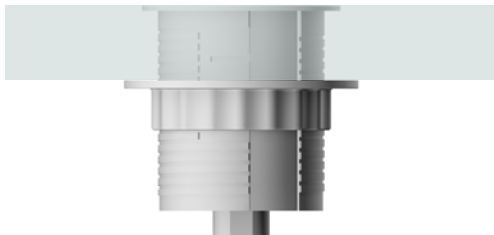
TOP-MOUNTING



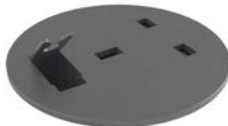
935-PM61W POWERDOT MIDI, WHITE
1 POWER, 1 USB-CHARGER (2.1 A)
1.7 M CONNECTION (SCHUKO)
FIXED LEVEL, HEIGHT 89 MM.




935-PM61 POWERDOT MIDI, BLACK
1 POWER, 1 USB-CHARGER (2.1 A)
1.7 M CONNECTION (SCHUKO)
FIXED LEVEL, HEIGHT 89 MM.




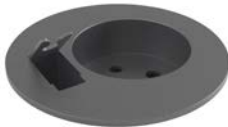
FLUSH-MOUNTING




935-PM70  POWERDOT MIDI, BLACK
1 **ENGLISH** POWER,
1 CABLE-THROUGH WITH CLIPS
1.7 M CONNECTION (UK)
FIXED LEVEL, HEIGHT 82 MM.




935-PM71  POWERDOT MIDI, BLACK
1 **ENGLISH** POWER, 1 USB-CHARGER (2.1 A)
1.7 M CONNECTION (UK)
FIXED LEVEL, HEIGHT 89 MM.



935-PM80  POWERDOT MIDI, BLACK
1 **FRENCH** POWER,
1 CABLE-THROUGH WITH CLIPS
1.7 M CONNECTION (FR)
FIXED LEVEL, HEIGHT 82 MM.



935-PM81  POWERDOT MIDI, BLACK
1 **FRENCH** POWER, 1 USB-CHARGER (2.1 A)
1.7 M CONNECTION (FR)
FIXED LEVEL, HEIGHT 89 MM.



Ø51

POWERDOT **MINI** Ø51 MM**THE WORLD'S SMALLEST OUTLET!**

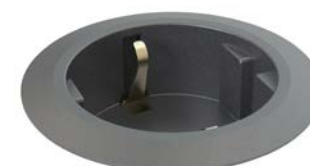
The Powerdot Mini has a reduced diameter to only fit an electrical socket. We also created a grommet with USB chargers in the same size.



935-PM50W □ POWERDOT MINI, WHITE



935-PM51W □ POWERDOT MINI, WHITE



935-PM50 ■ POWERDOT MINI, BLACK
1 POWER (SCHUKO),
1,5 M CONNECTION (SCHUKO)
FIXED LEVEL. HEIGHT 65 MM.



935-PM51 ■ POWERDOT MINI, BLACK
2 USB-CHARGER (2.4 A)
1,5 M CONNECTION (SCHUKO)
FIXED LEVEL. HEIGHT 65 MM.

POWERDOT MINI **ACCESSORIES**

Bracket for mounting of single / double mounting under table top and sitting furniture.

ACCESSORIES

935-SF01 □ POWERDOT BRACKET MINI, SINGLE, WHITE

935-SF01 ■ POWERDOT BRACKET MINI, SINGLE, BLACK

935-SF02 □ POWERDOT BRACKET MINI, DOUBLE, WHITE

935-SF02 ■ POWERDOT BRACKET MINI, DOUBLE, BLACK



Fits just as well under a table as under a sofa or other furniture.



POWERDOT **MICRO** Ø 30 MM



ONLY THE MOST ESSENTIAL!

Powerdot Micro meets the need for a small, stylish USB charger that fits almost anywhere. Despite a diameter of only 30 mm, it is equipped with dual USB ports for charging.

POWERDOT **MICRO** Ø 30 MM, PLASTIC



935-PM30W POWERDOT MICRO, WHITE
2 USB-CHARGER (2.0 A)
FIXED LEVEL 36 MM.



935-PM30B POWERDOT MICRO, BLACK
2 USB-CHARGER (2.0 A)
FIXED LEVEL 36 MM.

POWERDOT **MICRO** Ø 30 MM, METAL

We offer Powerdot Micro in a number of alternative designs with a metal-top in the highest quality. They have the same fine features as PM30W / B.

PINK QUARTZ	BRASS	ANTHRACITE	SILVER
935-PM30C	935-PM30M	935-PM30G	935-PM30S
WHITE	BLACK	SOLID COPPER	SOLID BRASS
935-PM30WM	935-PM30BM	935-PM30K	935-PM30Z

PINK QUARTZ	BRASS	ANTHRACITE	SILVER
935-PM31C	935-PM31M	935-PM31G	935-PM31S
WHITE	BLACK	SOLID COPPER	SOLID BRASS
935-PM31W	935-PM31	935-PM31	935-PM31





POWER & DATA

Axessline gives access to Power, Data and Media at conference tables and workplaces; a stylish design with optimal functionality and quality.

DESK MODEL AXESSLINE DESK

Elegant desk models for simple edge-mounting.
Provides immediate access to both power supply
and data connection.

935-D2M0 AXESSLINE DESK, 230 x 90 mm
TERMINAL STRIP INCL. 2 POWER, 1 CABLE-THROUGH
TABLE BRACKET.

935-D2DU AXESSLINE DESK, 280 x 70 mm
TERMINAL STRIP INCL. 2 POWER 2 DATA, 2 USB.
TABLE BRACKET.

935-D2UC AXESSLINE DESK, 280 x 70 mm
TERMINAL STRIP INCL. 2 POWER, 2 USB-CHARGER
TABLE BRACKET.

935-D3DU AXESSLINE DESK, 200 x 90 mm.
TERMINAL STRIP INCL. 3 POWER 1 DATA, 2 USB-CHARGER.

935-I2CD AXESSLINE INTEGRATED DESK, 310 x 95 mm
FOR INCLUSION IN THE TABLETOP REAR EDGE.
TERMINAL STRIP INCL. 2 POWER 1 DATA, 2 USB-CHARGER.

935-I2M0 AXESSLINE INTEGRATED DESK, 250 x 90 mm
FOR INCLUSION IN THE TABLETOP REAR EDGE.
TERMINAL STRIP INCL. 2 POWER 1 CABLE-THROUGH

935-R2DU AXESSLINE INTEGRATED MOUNTING
2 POWER 1 DATA 2 USB-CHARGER, LENGTH 248 MM.

CONNECTION 1.5 M. SCHUKO-CONTACT.



935-D2M0



935-D2UC



935-D2DU



935-I2CD



935-D3DU



935-I2M0

EASILY ACCESSIBLE POWER OUTLETS - ECODESK

A smart, yet simple design for desk assembly of power outlets on the edge of the desktop.

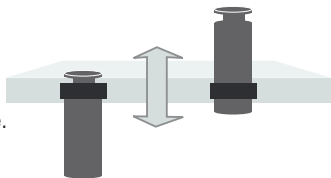
936-ET315W □ ECODESK, 3 POWER, 1.5 M, WHITE

936-ET315B ■ ECODESK, 3 POWER, 1.5 M, BLACK



AXESSLINE POPUP

Includes terminal strips that are integrated into the PopUp,
which allows for easy mounting in desktop and cabinet furniture.
A practical option in both office and home environments.



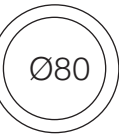
935-P630 AXESSLINE POPUP
TERMINAL STRIP, LEVEL-LOCKING. 3 POWER.
CUT OUT Ø 60 MM. COLOUR ALU/BLACK
CONNECTION 1.5 M SCHUKO-CONNECTION.



CUT OUT
Ø 60 MM
PRODUCT
Ø 70 MM

935-P63U AXESSLINE POPUP
TERMINAL STRIP, LEVEL LOCKING. 3 POWER.
2 USB-CHARGER. CUT OUT Ø 60 MM. COLOUR: ALU/BLACK
CONNECTION 1.5 M SCHUKO-CONNECTION.

935-P2DC AXESSLINE POPUP CONFERENCE
2 POWER, 2 DATA, 2 USB, 1 VGA / AUDIO, 1 HDMI
CUT OUT Ø 80 MM. COLOUR: ALU/BLACK
CONNECTION 0.5 M WIELAND-CONNECTION.



CUT OUT
Ø 80 MM
PRODUCT
Ø 90 MM



935-P630



935-P63U



935-P2DC

ONE CLICK IS **ALL YOU NEED**

Axessline QuickBox is a compact “Access Centre” for a lowered assembly in the desktop, which is very easy to install. Axessline QuickBox provides a complete yet easily accessible solution at the simple push of a button. The product’s spring mechanism automatically opens up its cover to give instant access to a wide range of technical options.



1 POWER, 2 USB-CHARGER

- 935-F100W □ QUICKBOX, WHITE LACQUERED
- 935-F100B ■ QUICKBOX, BLACK LACQUERED
- 935-F100 ■ QUICKBOX, BRUSHED STEEL

CUT-OUT 192 X 92 MM

2 POWER, 2 DATA (RJ45), 2 USB-CHARGER (2.4 A)

- 935-F200 ■ QUICKBOX, BRUSHED STEEL

CUT-OUT 278 X 92 MM

3 POWER, 2 USB-CHARGER (2.4 A)

- 935-F300W □ QUICKBOX, WHITE LACQUERED
- 935-F300B ■ QUICKBOX, BLACK LACQUERED
- 935-F300 ■ QUICKBOX, BRUSHED STEEL

CUT-OUT 278 X 92 MM



FOR **MEETING ROOMS**

Axessline QuickBox has the same features as F100-F300 but equipped with **Data** and **HDMI** connections. Suitable for conference and meeting rooms.

- 935-F400W □ QUICKBOX, WHITE LACQUERED
- 935-F400B ■ QUICKBOX, BLACK LACQUERED
- 935-F400 ■ QUICKBOX, BRUSHED STEEL

3 POWER, 2 USB-CHARGER (2.4 A),
1 DATA (RJ45), 1 HDMI, 1,5 M POWER CORD





FOR CONFERENCE & MEETING ROOMS

CONFERENCE KITS

AXESSLINE **CONFERENCE KITS**

Complete packages for a stylish and functional conference table.
Choose the colour and size that suits you. A complete kit of products which makes installation easy.



A unique switch lid for optimum access from either side.

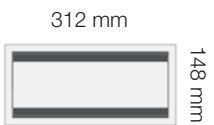
CONFERENCE KIT **“SMALL”**

DIMENSION COVER: 312 X 148 MM
CUT OUT: 303 X 141 MM

CONNECTIONS:
2 POWER
2 DATA
2 USB/A-PORTS
2 USB/A-CHARGERS
1 HDMI

CABLE: 0,5 M

935-K44CW ☐ AXESSLINE “SMALL” CONFERENCE, WHITE
935-K44C ☒ AXESSLINE “SMALL” CONFERENCE, SILVER
935-K44CB ☐ AXESSLINE “SMALL” CONFERENCE, BLACK



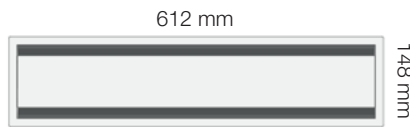
CONFERENCE KIT **“LARGE”**

DIMENSION COVER: 612 X 148 MM
CUT OUT: 603 X 141 MM

CONNECTIONS:
5 POWER
4 DATA
2 USB-CHARGERS
1 HDMI

CABLE: 0,5 M

935-K46DW ☐ AXESSLINE “LARGE” CONFERENCE, WHITE
935-K46D ☒ AXESSLINE “LARGE” CONFERENCE, SILVER
935-K46DB ☐ AXESSLINE “LARGE” CONFERENCE, BLACK





DESKTOP LEVEL MOUNTING

Choose two or four slots, then choose whichever connections you want to include. Just put in different models of Powerdot to compose the combination you need. See page 21 for complete assortment.



FOR CONFERENCE & MEETING ROOMS

POWERDOT KITS

Hidden assembly.
Ready-made kits makes it easy for you!

COMPLETE KITS **WITH** POWERDOTS

INCLUDES TABLE COVER, POWERDOT TRAY, POWERDOT PD10, FLAME PROOF TEXTILE BAG, MULTIPLE SOCKET

SMALL 2

DIMENSION COVER: 312 X 148 MM. CUT OUT: 303 X 141 MM
2 POWERDOTS, TOTAL 2 POWER, 8 CABLE-THROUGHS

- 935-K210W ☐ POWERDOT SMALL CONFERENCE, 2 POWERDOT, WHITE
935-K210 ☐ POWERDOT SMALL CONFERENCE, 2 POWERDOT, SILVER
935-K210B ☐ POWERDOT SMALL CONFERENCE, 2 POWERDOT, BLACK

LARGE 5

DIMENSION COVER: 612 X 148 MM. CUT OUT: 603 X 141 MM
5 POWERDOTS, TOTAL 5 POWER, 20 CABLE FEED-THROUGH

- 935-K510W ☐ POWERDOT LARGE CONFERENCE, 5 POWERDOT, WHITE
935-K510 ☐ POWERDOT LARGE CONFERENCE, 5 POWERDOT, SILVER
935-K510B ☐ POWERDOT LARGE CONFERENCE, 5 POWERDOT, BLACK



COMPLETE PACK **WITHOUT** POWERDOTS

INCLUDES TABLE COVER, POWERDOT TRAY, FLAME PROOF TEXTILE BAG, MULTIPLE SOCKET

SMALL 2

DIMENSION COVER: 312 X 148 MM. CUT OUT: 303 X 141 MM
2 SPACES FOR Ø80 POWERDOTS

- 935-K200W ☐ POWERDOT SMALL CONFERENCE, WHITE
935-K200 ☐ POWERDOT SMALL CONFERENCE, SILVER
935-K200B ☐ POWERDOT SMALL CONFERENCE, BLACK

LARGE 5

DIMENSION COVER: 612 X 148 MM. CUT OUT: 603 X 141 MM
5 SPACES FOR Ø80 POWERDOTS

- 935-K500W ☐ POWERDOT LARGE CONFERENCE, WHITE
935-K500 ☐ POWERDOT LARGE CONFERENCE, SILVER
935-K500B ☐ POWERDOT LARGE CONFERENCE, BLACK



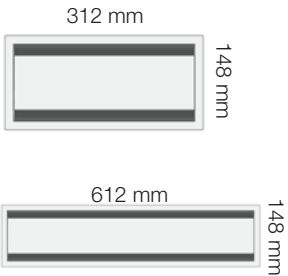
CONCEALED INSTALLATION WITH EXISTING LID
Do you already have a lid in the table?
Just mount our Powerdot outlet tray below.
See page 21 for specifications.





CONFERENCE COVERS **AXESSLINE DUO**

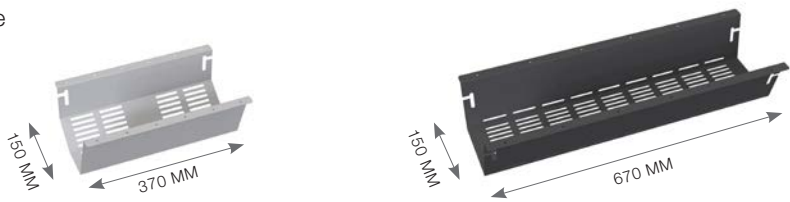
- 935-TC30W □ AXESSLINE DUO, WHITE, 312X148 MM
- 935-TC30 ■ AXESSLINE DUO, SILVER, 310X148 MM
- 935-TC30B ■ AXESSLINE DUO, BLACK, 312X148 MM



- 935-TC60W □ AXESSLINE DUO, WHITE, 612X148 MM
- 935-TC60 ■ AXESSLINE DUO, SILVER, 612X148 MM
- 935-TC60B ■ AXESSLINE DUO, BLACK, 612X148 MM

PDU TRAY SUITABLE FOR AXESSLINE TERMINAL STRIPS

Cable tray suitable for installation in conference & desk with Axessline outlet strips, or regular powerstrip. Practical cable cable-through and perforated bottom section for good ventilation.



- 935-TK31 ■ PDU TRAY, SILVER
HEIGHT 120 MM

- 935-TK61W □ PDU TRAY, WHITE
- 935-TK61 ■ PDU TRAY, SILVER
- 935-TK61B ■ PDU TRAY, BLACK
HEIGHT 120 MM

TERMINAL STRIP **AXESSLINE**

Terminal strips for mounting in tray. All are supplied with Wieland connection for electricity.

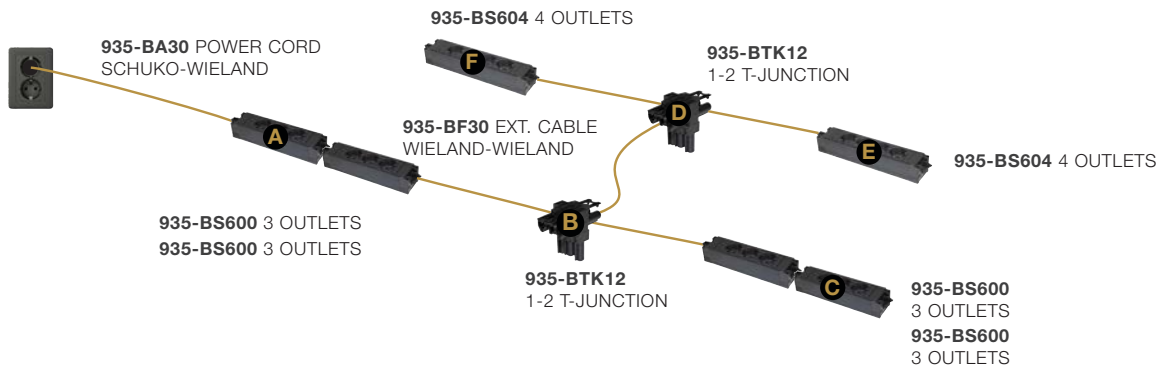
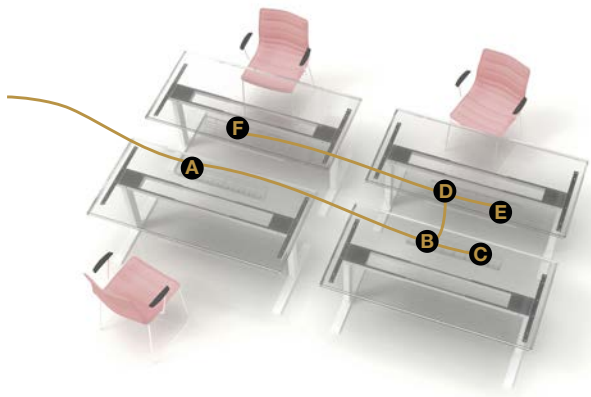
- 935-T2DC AXESSLINE TERMINAL STRIP CONFERENCE, 2 POWER 2 DATA 2 USB-PORT 1 VGA 1 HDMI, LENGTH 280 MM.
- 935-T2UD AXESSLINE TERMINAL STRIP CONFERENCE, 2 POWER 2 DATA 2 USB-PORT 2 USB-CHARGER 1 HDMI, LENGTH 330 MM.
- 935-T5UD AXESSLINE TERMINAL STRIP CONFERENCE, 5 POWER 4 DATA 2 USB-PORT 2 USB-CHARGER 1 HDMI, LENGTH 505 MM.
- 935-T7DD AXESSLINE TERMINAL STRIP CONFERENCE, 7 POWER 2 DATA, LENGTH 509 MM.
- 935-T3X2-3H AXESSLINE TERMINAL STRIP CONFERENCE (NOT SHIOWING), 2 X 3 EL, SHIELDED HALOGEN-FREE CABLES, LENGTH 420 MM.



AXESSLINE - POWER AND DATA AT THE OFFICE

Kondator Axessline range uses the proven connection system GST18-3 or commonly called Wieland connection.

Here you see an example of four workplaces (wireless network), which only use one power connection from the wallplug. In order not to overload the first connection, the total power consumption must not exceed 3500W.



- 937-BS600 DOCKY 3 POWER, BLACK
- 937-BS604 DOCKY 4 POWER, BLACK
- 935-BA20 POWER CORD, WIELAND -> SCHUKO/GROUNDED, 2.0 M
- 935-BA30 POWER CORD, WIELAND -> SCHUKO/GROUNDED, 3.0 M
- 935-BA50 POWER CORD, WIELAND -> SCHUKO/GROUNDED, 5.0 M
- 935-BF20 EXTENSION CABLE, WIELAND -> WIELAND, 2.0 M
- 935-BF30 EXTENSION CABLE, WIELAND -> WIELAND, 3.0 M
- 935-BF50 EXTENSION CABLE, WIELAND -> WIELAND, 5.0 M

- 937-BTK12 T-JUNCTION, 1 WIELAND MALE -> 2 WIELAND FEMALE
- 937-BTK13 T-JUNCTION, 1 WIELAND MALE -> 3 WIELAND FEMALE





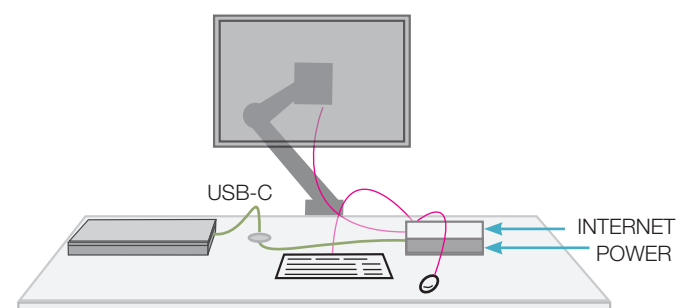
MAKE EVERYDAY LIFE EASIER

Our world is changing and also our way of working.

Two important advantages that make Ochno the future system.

- Co-working, free seating and activity-based offices are increasing explosively all the time.
- The IT industry has agreed on a standard and cable for “everything”, USB type C.

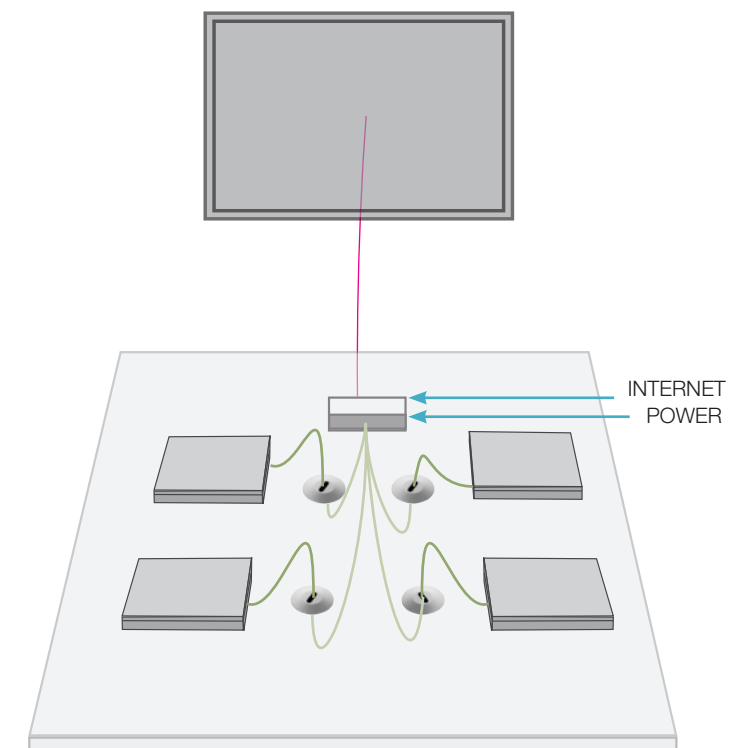
You can charge (100W), transmit video signal, and data communication in the same cable. With the help of extra accessories for Ochno you can control lighting, log power consumption and much more. Contact us for a complete review.



Example of Ochno Power Desktop installation

OCHNO SYSTEM

Experience the power of integrated USB-C solutions completely independent of manufacturer and model. No additional costs for changing computers in the future! Choose between workplace or conference configuration.



Example of Ochno Power Conference installation. You easily choose which computer to be mirrored to the monitor with a simple touch of a button.



Ochno Power Desktop is a USB Type-C docking station with unique features for flexible workplaces of the future.

Fully equipped USB-C docking station that provides charging, dual displays, mouse / keyboard and network access to connected laptop, mobile and tablets. Provides power and control for displays and workplace lighting. Managed by Ochno Operated service which provides a range of smart office services. Also supports docking and desktop mode for selected Android phones and iPad Pro.



OCHNO Power Conference

Ochno Power Conference is a USB Type-C based charging- and video-switch with unique features that connect up to four laptops / mobiles to a monitor or projector. Including 4 pushbuttons for selecting the source.

The buttons can advantageously be placed at the ends of a conference table.



OCHNO Accessories

Cable-throughs for USB-C create elegant environments without visible cables. Choose from single USB-C connection or Powerdot PD16 with a lot more features.

WIRELESS CHARGING

Nowadays we always want to stay connected and available with our outside world. Since Apple introduced Qi technology as a standard in new models, the interest has been increasing exponentially. Axessline has options for both elegant and functional installation of wireless chargers. All our models are compatible with Quick charge for fast and efficient charging.



OPEN INSTALLATION FOR WIRELESS CLOSENESS

The Axessline Qi60 is a wireless charger, which ensures that your smartphone is fully charged when needed. Easy to use, completely wireless, it is an obvious tool in both the office and in the home environment, as in hotels and other public spaces.



- 935-Qi60W ☐ Qi CHARGER, WHITE
 935-Qi60 ☐ Qi CHARGER, BRUSHED STEEL
 935-Qi60B ☐ Qi CHARGER, BLACK
 CUT-OUT Ø 60 MM



STANDARD REVISION 1.2 + QUALCOMM QUICK CHARGING



HIDDEN CHARGE WHEN IT'S AT ITS BEST

Axessline Qi61, a powerful Qi wireless charger for hidden integrated mounting under the desk-top. A mounting that requires both accuracy and a little extra time, so it's usually designers and professionals' obvious choice. This is where you want to get a clean and elegant wood surface, which is completely unbroken even on top of the table top.



- 935-Qi61 ☐ Qi CHARGER HIDDEN ASSEMBLY
 MILLING Ø 60 MM
 MAX THICKNESS 3 MM BETWEEN
 CHARGER SURFACE AND TABLETOP.

STANDARD REVISION 1.2 + QUALCOMM QUICK CHARGING

AN ALL TOO COMMON SIGHT...



Is this something you've seen before?

We believe you might have... Our products offer ways to keep your workspace in order. Both above and under the desk.

...THAT EASILY CAN BE FIXED



Products used in this case:

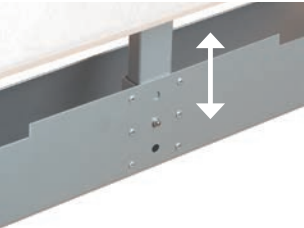
- 429-PI02W LiftPipe cable tray
- 935-PD10W Powerdot, white
- 429-OP50T Cable tube

CABLE MANAGEMENT

TRAYS & CABLE DUCTS

ELEGANT, NEAT AND PRACTICAL

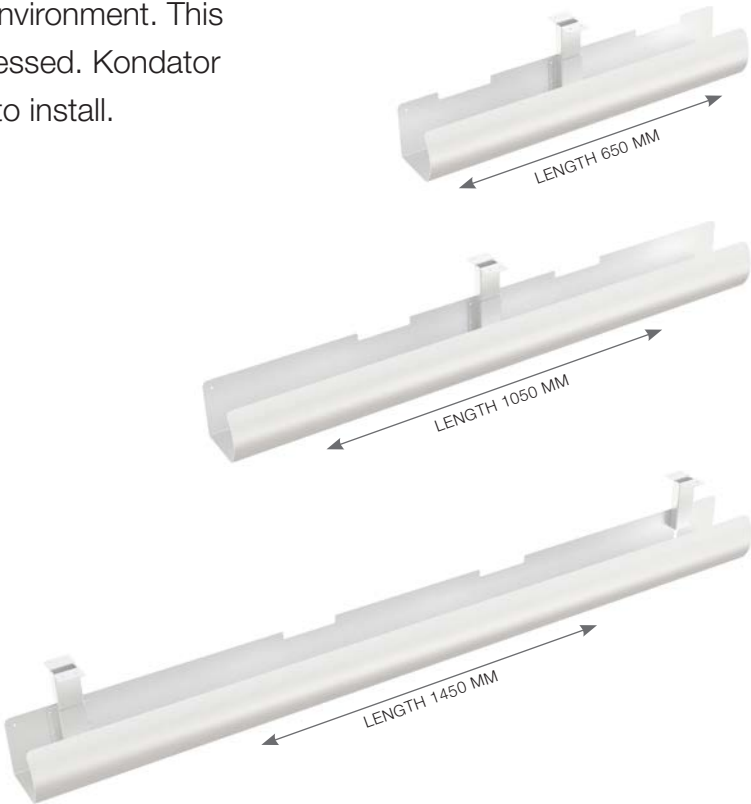
Loose cables are often a boring element in our daily environment. This is often a practical problem, which can easily be addressed. Kondator has several options, which are both flexible and easy to install.



CABLE TRAY **LIFTPIPE**

Elegant shape with rounded front. Adapts to all workplaces and desk styles. A clever design with centred fastener for easy assembly. Adjustable to three levels with quick-lock. No tools required. The quick-lock system ensures easy disassembly and cable access.

- 429-PI01 ■ LIFTPIPE, **650 MM**, SILVER
- 429-PI02W □ LIFTPIPE, **1050 MM**, WHITE
- 429-PI02 ■ LIFTPIPE, **1050 MM**, SILVER
- 429-PI02B ■ LIFTPIPE, **1050 MM**, BLACK
- 429-PI03 ■ LIFTPIPE, **1450 MM**, SILVER



FLEXIBLE CABLE TRAY **EXPAND**

A flexible and stable design with hidden suspension, which is adjustable in length **(950 - 1800 mm)**. The cable tray may optionally be mounted with high or low front directly on the underlying tabletop or wall display.

- 429-FX05W □ CABLE TRAY FLEXIBLE, WHITE
- 429-FX05 ■ CABLE TRAY FLEXIBLE, SILVER
- 429-FX05 ■ CABLE TRAY FLEXIBLE, BLACK
LENGTH **950-1800 MM**

ACCESSORIES

THE EXPAND CABLE TRAY CAN BE USED AS TWO FIXED CABLE TRAYS IF YOU NEED. ALTHOUGH AN EXTRA PAIR OF HOLDERS IS NEEDED.

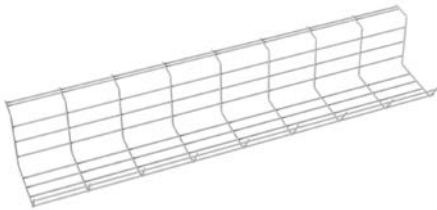
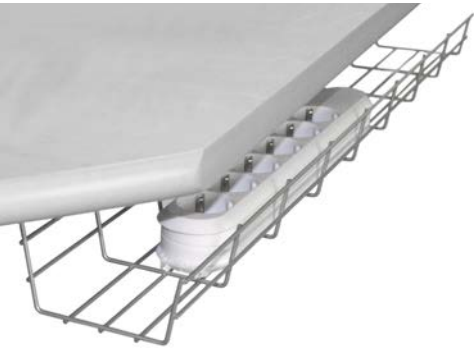
- 429-FX06W □ HOLDER - EXPAND, PAIR, WHITE
- 429-FX06 ■ HOLDER - EXPAND, PAIR, SILVER



CABLE TRAY **RÄNNA**

Create a nice work environment with this wire cable tray and accessories. No messy cable bundles and loose connectors.

- 429-4004 □ "RÄNNA", WHITE
- 429-4001 ■ "RÄNNA", SILVER
- 429-4002 ■ "RÄNNA", BLACK



PREPARED FOR GROUNDED CONNECTION.
DIMENSIONS: LENGTH 720 MM, DEPTH 150 MM,
HEIGHT 101 MM. CAN BE CUT INTO LENGTHS
FOR DIMENSIONAL MODIFICATION .

SOFT FLOOR **CABLE TUBE**

A highly robust and durable cable cover. Its flat design minimizes obstruction whilst its flexible material allows for easy adjustments. Delivered complete with two end pieces. Width 150 mm.

- 429-S30BM CABLE TUBE SOFT, GREY, 3000 MM
- 429-SJOBM EXTENSION PIECE
- 429-SECBM END PIECE / PAIR

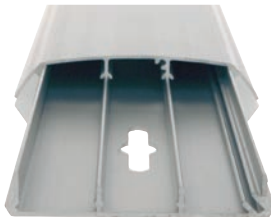


PLENTY OF INTERIOR CABLE CHANNELS

ALUMINIUM **CABLE DUCT**

Elegant floor cable duct with removable lid for easy laying of cables. In a robust aluminium design.

- 429-2500 CABLE DUCT ALU, 2500 MM
CUSTOM LENGTH ON REQUEST



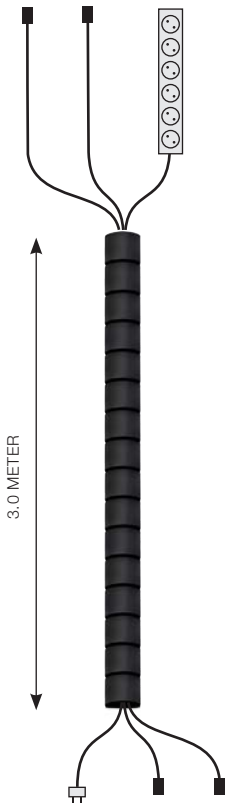
PLENTY OF INTERIOR CABLE CHANNELS

CABLE MANAGEMENT

READY CABLE-KITS

CABLECOLLECT... JUST CONNECT!

Prefabricated EasyCover Cable Snake, with power, data and telephone outlets. Collected in one place.



3.0 M
PLASTIC CABLE TUBE

- 936-EC30NNB** CABLECOLLECT 3.0 M, BLACK
- 936-EC30NN** CABLECOLLECT 3.0 M, SILVER
- 936-EC30NNW** CABLECOLLECT 3.0 M, WHITE
 - 1 PCS 6-OUTLET POWER STRIP 3 M
 - 2 PCS NETWORK CABLE / 5 M (CAT6)

- 936-EC30NB** CABLECOLLECT 3.0 M, BLACK
- 936-EC30N** CABLECOLLECT 3.0 M, SILVER
- 936-EC30NW** CABLECOLLECT 3.0 M, WHITE
 - 1 PCS 6-OUTLET POWER STRIP 3 M
 - 1 PCS NETWORK K CABLE / 5 M (CAT6)



3.0 M
BRAIDED CABLE TUBE

- 936-ES30NNB** CABLECOLLECT 3.0 M, BLACK
- 936-ES30NN** CABLECOLLECT 3.0 M, SILVER
- 936-ES30NNW** CABLECOLLECT 3.0 M, WHITE
 - 1 PCS 6-OUTLET POWER STRIP 3 M
 - 2 PCS NETWORK CABLE / 5 M (CAT6)

- 936-ES30NB** CABLECOLLECT 3.0 M, BLACK
- 936-ES30N** CABLECOLLECT 3.0 M, SILVER
- 936-ES30NW** CABLECOLLECT 3.0 M, WHITE
 - 1 PCS 6-OUTLET POWER STRIP 3 M
 - 1 PCS NETWORK CABLE / 5 M (CAT6)



5.0 M
PLASTIC CABLE TUBE

- 936-EC50NNB** CABLECOLLECT 5.0 M, BLACK
- 936-EC50NN** CABLECOLLECT 5.0 M, SILVER
- 936-EC50NNW** CABLECOLLECT 5.0 M, WHITE
 - 1 PCS 6-OUTLET POWER STRIP 5 M
 - 2 PCS NETWORK CABLE / 7 M (CAT6)

- 936-EC50NB** CABLECOLLECT 5.0 M, BLACK
- 936-EC50N** CABLECOLLECT 5.0 M, SILVER
- 936-EC50NW** CABLECOLLECT 5.0 M, WHITE
 - 1 ST 6-OUTLET POWER STRIP 5 M
 - 1 ST NETWORK CABLE / 7 M (CAT6)

5.0 M
BRAIDED CABLE TUBE

- 936-ES50NNB** CABLECOLLECT 5.0 M, BLACK
- 936-ES50NN** CABLECOLLECT 5.0 M, SILVER
- 936-ES50NNW** CABLECOLLECT 5.0 M, WHITE
 - 1 PCS 6-OUTLET POWER STRIP 5 M
 - 2 PCS NETWORK CABLE / 7 M (CAT6)

- 936-ES50NB** CABLECOLLECT 5.0 M, BLACK
- 936-ES50N** CABLECOLLECT 5.0 M, SILVER
- 936-ES50NW** CABLECOLLECT 5.0 M, WHITE
 - 1 PCS 6-OUTLET POWER STRIP 5 M
 - 1 PCS NETWORK CABLE / 7 M (CAT6)



CABLE MANAGEMENT

CLIPS / CABLE SNAKE / CABLE WRAPS

Cable management helps you create a clean and nice workplace environment. Delivered on roll for easy and flexible installation, it can easily be cut to any length with a heater knife.



CABLE TIE SET & CABLE CLIPS



VELCRO CABLE TIE SET, 3 PCS
■ 429-180CB BLACK, MAX Ø40 MM
■ 429-180CG SILVER, MAX Ø40 MM



VELCRO BAND
■ 429-KB20, ROLL 25 M



CLIPS
■ 429-KC25, 5 PCS



CLIPS
■ 429-KC28
INCL. SKREW



CABLE SNAKE

INCL HANDTOOL
Diameter Ø 25 mm, length 2 m



■ 429-0225B BLACK ■ 429-0225 SILVER □ 429-0225W WHITE

Diameter Ø 25 mm, length 20 m rulle



■ 429-2025B BLACK ■ 429-2025 SILVER □ 429-2025W WHITE





BRAIDED WRAP / ZIPPER

Diameter Ø 20 mm, length 1.5 m alt. 3.0 m



1,5M — ■ 429-3015B BLACK ■ 429-3015G SILVER □ 429-3015W WHITE
3,0M — ■ 429-3030B BLACK ■ 429-3030G SILVER □ 429-3030W WHITE





BRAIDED WRAP / SELF-CLOSING

Diameter Ø 25 mm, length 25 m roll



■ 429-25SB BLACK ■ 429-25SG SILVER □ 429-25SW WHITE





WOVEN WRAP / SELF-CLOSING NO-FRAY

Diameter Ø 20 mm, length 25 m roll



■ 429-19KB BLACK □ 429-19KW WHITE





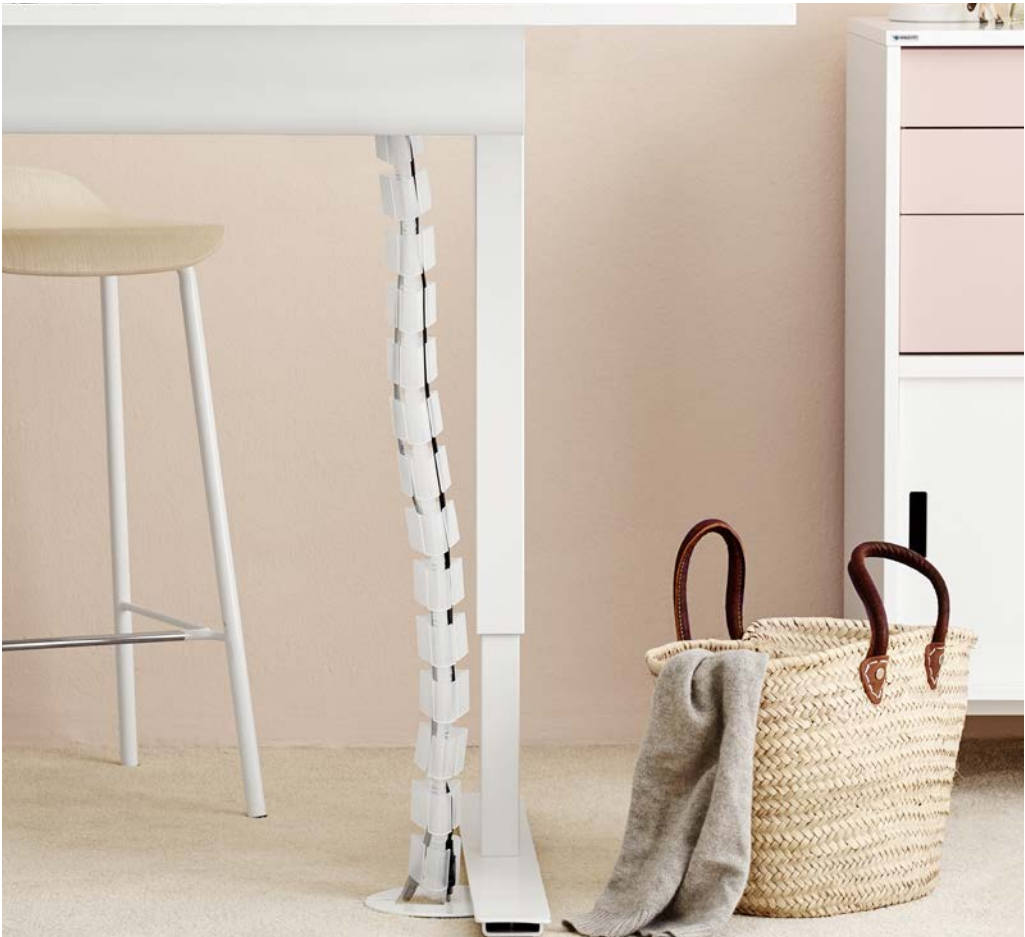
WOVEN WRAP / VELCRO

Diameter Ø 40 mm, length 25 m roll
Suitable for hanging from ceiling to table or floor.



■ 429-2011B BLACK ■ 429-2011 SILVER □ 429-2011W WHITE





HANGING CABLE TUBES

Get the cables from the cable tray to the floor without making a mess.

- 429-OP50B

CABLE TUBE, BLACK
- 429-OP50T

CABLE TUBE, WHITE TRANSPARENT

CAN EASILY BE ADJUSTED IN LENGTH AS REQUIRED.



CABLE FEEDTHROUGH

POWERDOT FEEDTHROUGH Ø79 MM



935-PBCB
BLACK BUSH, BLACK COVER



935-PWCB
WHITE BUSH, BLACK COVER



935-PWCS
WHITE BUSH, SILVER COVER



429-KS37W



429-KS66W



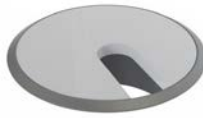
429-KS38W



935-PWCW
WHITE BUSH, WHITE COVER



935-PBCW
BLACK BUSH, WHITE COVER



935-PBCS
BLACK BUSH, SILVER COVER



429-KS37



429-KS66



429-KS38



429-KS37B



429-KS66B



429-KS38B

POWER ACCESSORIES

- 936-E3V15(B)

POWER STRIP, 3 OUTLETS, WHITE, 1.5 M
- 936-E3V30(B)

POWER STRIP, 3 OUTLETS, WHITE, 3 M
- 936-E3V50(B)

POWER STRIP, 3 OUTLETS, WHITE, 5 M

- 936-E6V15(B)

POWER STRIP, 6 OUTLETS, WHITE, 1.5 M
- 936-E6V30(B)

POWER STRIP, 6 OUTLETS, WHITE, 3 M
- 936-E6V50(B)

POWER STRIP, 6 OUTLETS, WHITE, 5 M

(B) BLACK VERSION

- 936-EN50B

DATA CABLE 5.0 M, BLACK
- 936-EN50W

DATA CABLE 5.0 M, WHITE
- 936-EN70B

DATA CABLE 7.0 M, BLACK
- 936-EN70W

DATA CABLE 7.0 M, WHITE



- 429-KS37W

□ Ø60 MM, PLASTIC, WHITE
- 429-KS37

■ Ø60 MM, PLASTIC, SILVER
- 429-KS37B

■ Ø60 MM, PLASTIC, BLACK

- 429-KS66W

□ Ø60 MM, METAL, WHITE
- 429-KS66

■ Ø60 MM, BRUSHED STEEL
- 429-KS66B

■ Ø60 MM, METAL, BLACK

- 429-KS38W

□ Ø80 MM, PLASTIC, WHITE
- 429-KS38

■ Ø80 MM, PLASTIC, SILVER
- 429-KS38B

■ Ø80 MM, PLASTIC, BLACK

OUTLET BOXES
AXESSLINE ONO

A series of outlet boxes with elegant covers that are easily installed into the desk surface.



Table top for integrated desk-mounting.
Cut-out measurements 190 × 111 mm.

- 935-TB19W

□ AXESSLINE ONO, WHITE
- 935-TB19A

■ AXESSLINE ONO, SILVER
- 935-TB19B

■ AXESSLINE ONO, BLACK



Table top for integrated desk-mounting
Cut-out measurements 290 × 111 mm.

- 935-TB29W

□ AXESSLINE ONO, WHITE
- 935-TB29A

■ AXESSLINE ONO, SILVER
- 935-TB29B

■ AXESSLINE ONO, BLACK

ACCESSORIES



- TRAYS:

935-TK20

MOUNTING BRACKET FOR ONO TB19, SILVER



- TRAYS:

935-TK31

PDU TRAY FOR ONO TB29, SILVER



- CONNECTIONS (EXAMPLE):

936-E3V30(B)

3-OUTLET POWER STRIP, WHITE (BLACK)



- CONNECTIONS (EXAMPLE):

935-T2DC

AXESSLINE POWER STRIP, 2 POWER
2 DATA 2 USB 1 VGA 1 HDMI

LIGHTING

Our eyes should work for a lifetime. We should therefore actively strive for the best possible working environment for the eyes. An obvious choice is a flicker-free working lamp!

KONDATOR NIILA

Innovative and clean-looking LED lamp with USB Charger. Adjustable five-step brightness control. The lamp is equipped with Eco-Timer which automatically turns off the lamp after 4 hours usage - which is both environmentally friendly and energy saving. The lamp can stylishly be folded.

CABLES

- 1 X 1.5 M ADAPTER (EUROPLUG)

SPECIFICATIONS

- 1100 / 880 / 660 / 440 / 220 LUX
- 95 LM/W
- 4000 KELVIN
- ECO-TIMER 4 HOURS
- 1 X USB-CHARGER (5V, 2.1A)
- 220-240V, DC 12V 2A, MAX 24W
- 7W POWER CONSUMPTION (ENERGY RATING A)

810-L20W ■ KONDATOR NIILA, WHITE
810-L20B □ KONDATOR NIILA, BLACK



DIASONIC D61

Well-known and elegant LED light. Equipped with a USB socket for charging a smartphone or tablet. Its automatic shut-off feature, Ecotimer, allows for environmentally responsible and cost-effective usage. Brightness can be adjusted in 5 different settings, with colour temperatures available in Work, Reading, Relaxation and Sleep mode.

- BRIGHTNESS 500, 600, 700, 800, 900, 1000, 1100 LUX
- COLOR TEMPERATURE 2300-7000 K
- USB-CHARGER

810-D61HB ■ DIASONIC LED D61, BLACK



DIASONIC D51

Dimming and touch control features provide optimal lighting in the workplace. Equipped with a USB socket for charging a smartphone or tablet. Its automatic shut-off feature, Ecotimer, allows for environmentally responsible and cost-effective usage. The brightness is adjusted by holding down the touch button.

- BRIGHTNESS 100, 300, 600, 900, 1100 LUX
- USB-CHARGER

810-D51H □ DIASONIC LED D51, WHITE





MEET LYKKE

Lykke is an innovative, aesthetic and tactile intuitive LED lamp for the entire workdesk. With a 1 meter long light source, it illuminates workplaces without the aid of luminaires or spotlights from the ceiling. With its intuitive touch controls, you can easily set the correct brightness and color temperature for your work load.

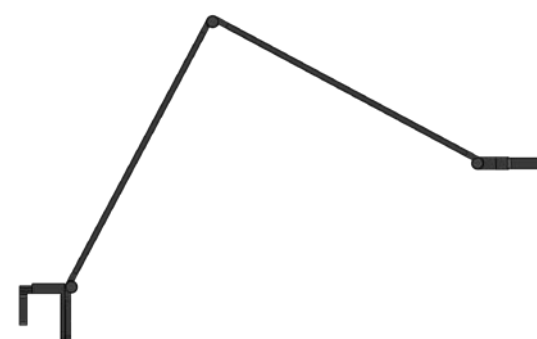
Lykke also contributes to reduced energy consumption due to automatic shutdown after 15 minutes in the absence of persons, so-called PIR. Universal clamping bracket for all types of table screens makes mounting easy.



ARKELO LYKKE

810-L10W □ ARKELO LYKKE, WHITE
810-L10B ■ ARKELO LYKKE, BLACK

- 1 X 0.8 M INTEGRATED DC CABLE
- 1 X 1.8 M DC ADAPTER (EUROPLUG)
- 2000 — 200 LUX (FROM LIGHTSOURCE)
- 2450 LUMEN (6500 K, FROM LIGHTSOURCE)
- 100 LM / W (6500 K, FROM LIGHTSOURCE)
- 3000 / 4000 / 6000 KELVIN
- UGR: <17 (UNIFIED GLARE RATING)
- PIR (PASSIVE INFRARED SENSOR)
- 220-240V, DC 24V 1.5A (24W), MAX 36W



DO MORE...

200 cm



...WITH LESS!

160 cm



LARGE DESKS... ... **WHAT A WASTE OF MONEY!**

Naturally, most people put the things they use on their desk. Over time, however, this tends to take up space and easily get messy.

At Kondator, we have a variety of solutions that help keep even the smallest desks organised without compromising functionality. With less desk space, you virtually create more 'office' space.

As illustrated above, we can reduce the size of a desk by 40cm without any loss of functionality.

This is achieved with the Conceptum toolbar, which allows us to lift the computer screen, telephone and other small items off the desk.

Likewise, we use the Liftsystem concept to hang the computer, it's cables and the dust bin under

the table, which effectively frees up space on both the desk and floor.

These simple yet ingenious solutions contribute to a better work place by retaining functionality whilst freeing up space in the office.

Less is more!

TOOLBAR

CONCEPTUM

Conceptum is a complete toolbar concept above the tabletop. The core is a stable toolbar rail for desk or wall mounting which can be complemented with a variety of accessories. A flexible concept which allows unique possibilities for adapting to every workplace.

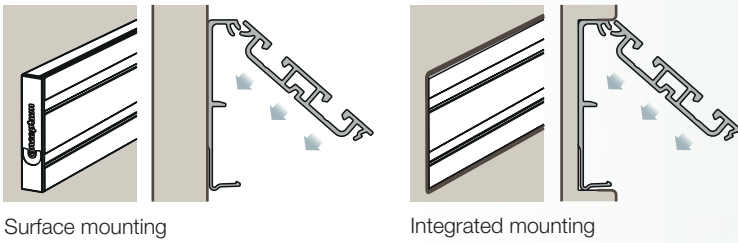
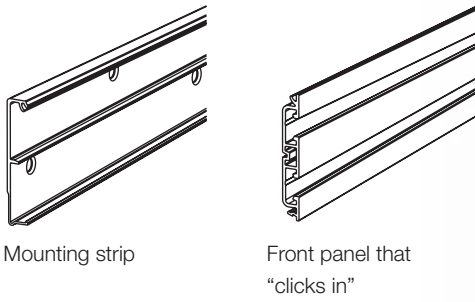
TOOLBAR **DESK SCREEN PROFILE**

Toolbar for surface or integrated mounting in desk screens. Easy to install. Well-concealed screw holes.

- 436-MX115B ■ CONCEPTUM M-PROFILE, BLACK, 1150 MM
- 436-MX135B ■ CONCEPTUM M-PROFILE, BLACK, 1350 MM
- 436-MX155b ■ CONCEPTUM M-PROFILE, BLACK, 1550 MM
- 436-MENEB ■ CONCEPTUM M-PROFILE, END-PIECE, BLACK, PAIR

- 436-MX115W □ CONCEPTUM M-PROFILE, WHITE, 1150 MM
- 436-MX135W □ CONCEPTUM M-PROFILE, WHITE, 1350 MM
- 436-MX155W □ CONCEPTUM M-PROFILE, WHITE, 1550 MM
- 436-MX175W □ CONCEPTUM M-PROFILE, WHITE, 1750 MM
- 436-MX195W □ CONCEPTUM M-PROFILE, WHITE, 1950 MM
- 436-MENEW □ CONCEPTUM M-PROFILE, END-PIECE, WHITE, PAIR

- 436-MX115 ■ CONCEPTUM M-PROFILE, ANODISED SILVER, 1150 MM
- 436-MX135 ■ CONCEPTUM M-PROFILE, ANODISED SILVER, 1350 MM
- 436-MX155 ■ CONCEPTUM M-PROFILE, ANODISED SILVER, 1550 MM
- 436-MX175 ■ CONCEPTUM M-PROFILE, ANODISED SILVER, 1750 MM
- 436-MX195 ■ CONCEPTUM M-PROFILE, ANODISED SILVER, 1950 MM
- 436-MENE ■ CONCEPTUM M-PROFILE, END-PIECE, SILVER, PAIR

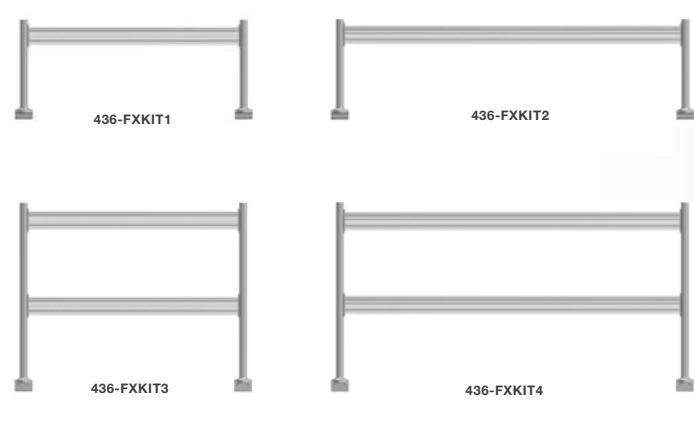


STAND-ALONE

CONCEPTUM

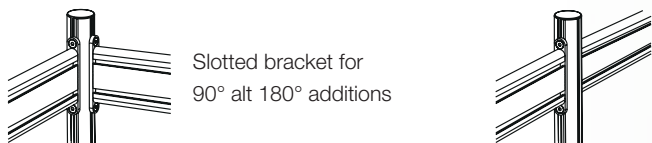
TOOLBAR **STAND-ALONE PROFILE**

A freestanding pole structure, which can be built to fit your needs.

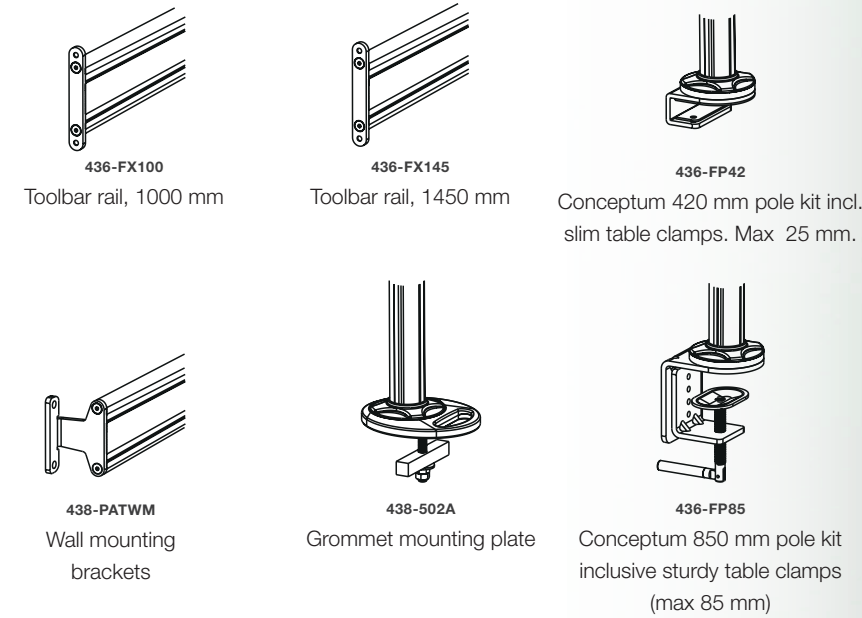


Ready “all inclusive” kits

- 436-FXKIT1 TOOLBAR, SINGLE RAIL INCL POLES AND BRACKETS, **1000 MM**
- 436-FXKIT2 TOOLBAR, SINGLE RAIL INCL POLES AND BRACKETS **1600 MM**
- 436-FXKIT3 TOOLBAR, DOUBLE RAIL INCL POLES (850 MM) AND BRACKETS, **1000 MM**
- 436-FXKIT4 TOOLBAR, DOUBLE RAIL INCL POLES (850 MM) AND BRACKETS, **1600 MM**



Custom-made assembly



CONCEPTUM **STORAGE**

Convenient storage with a neutral design.
Made of metal and powder coated in silver, white and black.



436-C101W □ SHELF C5, WHITE
436-C101A ■ SHELF C5, SILVER
DIMENSIONS 222 x 166 MM



436-C104B ■ SHELF C4, BLACK
436-C104W □ SHELF C4, WHITE
436-C104A ■ SHELF C4, SILVER
DIMENSIONS 327 x 221 MM



436-C103W □ BINDER AND BOOK SHELF, WHITE
436-C103A ■ BINDER AND BOOK SHELF, SILVER
DIMENSIONS 270 x 255 x 200 MM



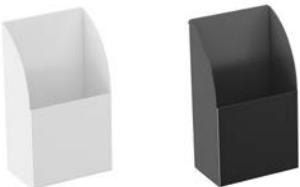
436-C124W □ SORTING TRAY, WHITE
436-C124A ■ SORTING TRAY, SILVER
3 PCS C4 SHELVES INCLUDED
DIMENSIONS 327 x 221



436-C105W □ LAPTOP-SHELF, WHITE
436-C105A ■ LAPTOP-SHELF, SILVER
DIMENSIONS 390 x 320 MM



436-C107W □ LAPTOP-SHELF, WHITE
436-C107A ■ LAPTOP-SHELF, SILVER
DIMENSIONS 400 x 400 MM



436-C106B ■ PEN AND GADGET HOLDER, BLACK
436-C106W □ PEN AND GADGET HOLDER, WHITE
436-C106A ■ PEN AND GADGET HOLDER, SILVER
DIMENSIONS 80 x 50 x 140 MM



436-C130B ■ LAPTOP POCKET, BLACK
436-C130W □ LAPTOP POCKET, WHITE
436-C130A ■ LAPTOP POCKET, SILVER
FITS COMPUTER MAX 30 MM
DIMENSIONS 280 x 138 MM



436-C140B ■ REPLICATOR HOLDER, BLACK
436-C140W □ REPLICATOR HOLDER, WHITE
436-C140A ■ REPLICATOR HOLDER, SILVER
DIMENSIONS 150 x 136 MM



436-C170B ■ HEADSET HOLDER, BLACK
436-C170W □ HEADSET HOLDER, WHITE
436-C170A ■ HEADSET HOLDER, SILVER
DIMENSIONS 52 x 53 MM



436-C160W □ SMARTPHONE HOLDER, WHITE
436-C160A ■ SMARTPHONE HOLDER, SILVER
DIMENSIONS 100 x 166 MM



436-C110 WHITEBOARD, WHITE/ALU
INCL. PEN SHELF
DIMENSIONS 165 x 225 MM

CONCEPTUM **MONITOR ARMS**

We have numerous options for hanging your monitor(s) on the Conceptum toolbar.



438-L16P ■ MONITOR ARM, 1-JOINT, SILVER
LENGTH 96 MM



438-L17P ■ MONITOR ARM, 2-JOINTS, SILVER
LENGTH 137 MM



438-L18PW □ MONITOR ARM, 3-JOINTS, WHITE
438-L18P ■ MONITOR ARM, 3-JOINTS, SILVER
LENGTH 249 MM



438-LC17W □ MONITOR ARM, 2-JOINTS, WHITE
438-LC17 ■ MONITOR ARM, 2-JOINTS, SILVER
LENGTH 143 MM



438-LC18W □ MONITOR ARM, 3-JOINTS, WHITE
438-LC18 ■ MONITOR ARM, 3-JOINTS, SILVER
LENGTH 323 MM



438-60T6W □ MONITOR SLIDER, WHITE
438-60T6 ■ MONITOR SLIDER, SILVER
FOR MONITOR 3-5 KG
438-60T8W □ MONITOR SLIDER, WHITE
438-60T8 ■ MONITOR SLIDER, SILVER
FOR MONITOR 5-7 KG
GAS SPRING MONITOR SLIDER, VERTICAL ADJUSTMENT



438-LC55W □ MONITOR ARM, GAS SPRING, 3-JOINTS, WHITE
438-LC55 ■ MONITOR ARM, GAS SPRING, 3-JOINTS, SILVER
LENGTH 300 MM. LOAD 3-8 KG.



438-LB15W ■ DUO-BAR FOR TWO MONITORS, BLACK
438-LC15 ■ DUO-BAR FOR TWO MONITORS, SILVER
438-LC15B □ DUO-BAR FOR TWO MONITORS, WHITE
MAX MONITOR C/C 742 MM



438-LC59W ■ MONITOR ARM, GAS SPRING, DUO-BAR, BLACK
438-LC59 ■ MONITOR ARM, GAS SPRING, DUO-BAR, SILVER
438-LC59B □ MONITOR ARM, GAS SPRING, DUO-BAR, WHITE
LOAD 7-14 KG. MAX MONITOR C/C 742 MM



438-LC56B ■ MONITOR ARM, GAS SPRING, 3-JOINTS, BLACK
438-LC56W ■ MONITOR ARM, GAS SPRING, 3-JOINTS, WHITE
438-LC56 □ MONITOR ARM, GAS SPRING, 3-JOINTS, SILVER
LENGTH 300 MM. LOAD 8-15 KG.

CONCEPTUM **LIGHTING**

Do not let the lamp take up a large part of the desk. You save space with the use of Conceptum LED lighting, with good lighting.



810-T45H □ LED LIGHTING INCL. BRACKET, WHITE
810-T45HG ■ LED LIGHTING INCL. BRACKET, GREY

MONITOR ARMS



WHY SHOULD I INVEST IN A **MONITOR ARM?**

Let us turn the question around... why should your body adapt to your workplace? With our monitor arms it doesn't need to. We have now widened our range to ascertain solutions for every possible need.



Note.
1) All models available in Silver, White (W) and Black (B)
2) For monitor mounting with Duo-Bar or when mounting Curved Monitors please check the maximum weight on our website.



OSLO STANDARD

A simple yet stylish and steady 4-joint monitor arm for table mounting. Delivered with an elegant low profile table mount.

Arm length	465 mm
Max load	14 kg
Standard	VESA 75/100
Height, pole	300 mm
Max table top	31 mm

438-LC15(W)(B)
MONITOR ARM LC15

OSLO WITH XL TABLE MOUNT

A simple yet stylish and steady 4-joint monitor arm for table mounting. Delivered with a table mount.

Arm length	465 mm
Max load	14 kg
Standard	VESA 75/100
Height, pole	400 mm
Table top	10-84 mm

438-LC25(W)(B)
MONITOR ARM LC25



OSLO STANDARD WITH GROMMET MOUNT

A simple yet stylish and steady 4-joint monitor arm for table mounting. Delivered with a grommet mount.

Arm length	465 mm
Max load	14 kg
Standard	VESA 75/100
Height, pole	400 mm
Table top	10-40 mm

438-LC26(W)(B)
MONITOR ARM LC26



SYSTEM **OSLO** — MONITOR ARMS

The “Oslo” product range offer a wide range of constellations which meet our customers demands for quality, design and mobility. These are so called Standard arms with movable joints and solid molded parts, which ensure the highest possible quality. If you’re moving between workstations, then opt for the “Stockholm” product range.

OSLO WITH TWIN-ARM

A simple yet stylish and steady 4-joint monitor arm for table mounting. Delivered with an elegant low profile table mount.

Arm length	2 x 465 mm
Max load	14 kg
Standard	VESA 75/100
Monitorbracket max	c/c 890 mm
Height, pole	300 mm
Max table top	31 mm

438-LC27(W)(B)
MONITOR ARM LC27 TWIN-ARM



OSLO WITH TWIN-ARM, GROMMET MOUNT

A simple yet stylish and steady 4-joint monitor arm for table mounting. Delivered with a grommet mount.

Arm length	2 x 465 mm
Max load	14 kg
Standard	VESA 75/100
Monitorbracket max	c/c 890 mm
Height, pole	400 mm
Table top	10-40 mm

438-LC28(W)(B)
MONITOR ARM LC28 TWIN-ARM



OSLO WITH DUO-BAR

A simple yet stylish and steady 4-joint monitor arm for table mounting. Complete with a Duo-bar for 2 monitors. Delivered with an elegant low profile table mount.

Arm length	465 mm
Max load	2 x 6 kg
Standard	VESA 75/100
Monitorbracket max	c/c 750 mm
Height, pole	300 mm
Max table top	31 mm

438-LC22(W)(B)
MONITOR ARM LC22 DUO-BAR



OSLO WITH DUO-BAR, GROMMET MOUNT

A simple yet stylish and steady 4-joint monitor arm for table mounting. Complete with a Duo-bar for 2 monitors. Complete with grommet mount.

Arm length	465 mm
Max load	2 x 6 kg
Standard	VESA 75/100
Monitorbracket max	c/c 750 mm
Height, pole	300 mm
Max table top	31 mm

438-LC24(W)(B)
MONITOR ARM LC24 DUO-BAR



OSLO SYSTEM-4

A simple yet stylish and steady 4-joint monitor arm for 2 x 2 monitors for table mounting. Complete with table mount.

Arm length	4 x 465 mm
Max load	20 kg
Standard	VESA 75/100
Monitorbracket max	c/c 890 mm
Height, pole	700 mm
Max table top	84 mm

438-LC29(W)(B)
MONITOR ARM LC29 SYSTEM-4



OSLO SYSTEM-4, GROMMET MOUNT

A simple yet stylish and steady 4-joint monitor arm for 2 x 2 monitors for table mounting. Complete with grommet mount.

Arm length	4 x 465 mm
Max load	20 kg
Standard	VESA 75/100
Monitorbracket max	c/c 890 mm
Height, pole	700 mm
Table top	10-40 mm

438-LC30(W)(B)
MONITOR ARM LC30 SYSTEM-4



SYSTEM **STOCKHOLM** — MONITOR ARMS

For the user with high demands on flexibility Stockholm range is the perfect choice. With ease you control the position of your monitor in a second. Which makes Stockholm the best solution for activity-based offices, where different persons use the same workstation. Regardless your height you easily put the monitor in the right position for you.



STOCKHOLM GAS SPRING ARM 3-8 KG

A gas spring monitor arm in elegant design. 2-armed with 5-joints for exact positioning and Quick-Release function.

Arm length	486 mm
Load	3-8 kg
Standard	VESA 75/100
Table top	16-50 mm

438-LC50(W)(B)
MONITOR ARM LC50



STOCKHOLM GAS SPRING DUO-BAR

A gas spring monitor arm in elegant design. 2-armed with 5-joints for exact positioning and Quick-Release function.

Arm length	486 mm
Load	2 x 6 kg
Standard	VESA 75/100
Monitorbracket, max	c/c 750 mm
Table top	16-50 mm

438-LC58(W)(B)
MONITOR ARM LC58 DUO-BAR



STOCKHOLM GAS SPRING TWIN-ARM

Double gas spring monitor arm in elegant design. 2-armed with 5-joints for exact positioning and Quick-Release function.

Arm length	486 mm
Load	2 x 3-8 kg
Monitorbracket, max	c/c 878 mm
Table top	16-50 mm

438-LC52(W)(B)
MONITOR ARM LC52 TWIN-ARM



STOCKHOLM HEAVY GAS SPRING, 8-19 KG

A gas spring monitor arm in elegant design. 2-armed with 5-joints for exact positioning and Quick-Release function. Delivered with both Table- & grommet mount.

Arm length	570 mm
Load	8-19 kg
Standard	VESA 75/100
Table top	16-50 mm

438-LC60(W)(B)
MONITOR ARM LC60 HEAVY



STOCKHOLM GAS SPRING 8-14 KG

A gas spring monitor arm in elegant design. 2-armed with 5-joints for exact positioning and Quick-Release function.

Arm length	486 mm
Load	8-14 kg
Standard	VESA 75/100
Table top	16-50 mm

438-LC53(W)(B)
MONITOR ARM LC53



STOCKHOLM HEAVY, GAS SPRING DUO-BAR MAX 8-19 KG

A gas spring monitor arm in elegant design, complete with Duo-bar for 2 monitors. Delivered with both Table- & grommet mount.

Arm length	570 mm
Load	8-19 kg
Standard	VESA 75/100
Monitorbracket, max	c/c 800 mm
Table top	16-50 mm

438-LC61(W)(B)
MONITOR ARM LC60 HEAVY DUO-BAR



STOCKHOLM GAS SPRING TWIN-ARM 8-14 KG

Double gas spring monitor arm in elegant design. 2-armed with 5-joints for exact positioning and Quick-Release function.

Arm length	486 mm,
Load	2 x 8-14 kg
Standard	VESA 75/100
Monitorbracket, max	c/c 878 mm
Table top	16-50 mm

438-LC57(W)(B)
MONITOR ARM LC57 TWIN-ARM



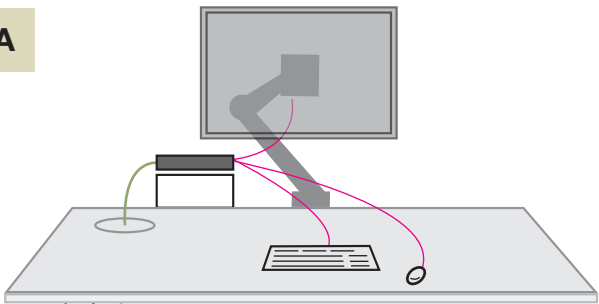
Note.
1) All models available in Silver, White (W) and Black (B)
2) For monitor mounting with Duo-Bar or when mounting Curved Monitors please check the maximum weight on our website.

NEW WAYS OF WORKING WITH **NEW TECHNOLOGY**

The trend towards a “connection hub” is forcing old docking stations away. A port replicator as it is called connects your laptop to your screens, keyboard etc. by using one single cable. But you will still need to place it somewhere by your desk. Here we have presented four different ways of placing the replicator by using our range of replicator holders.

All you need is:

A



FIFTY-FIFTY (50/50)

With this set-up, you may keep your computer neatly under the desk, have quick access to turn your port replicator on and off, and be able to connect external devices with ease.

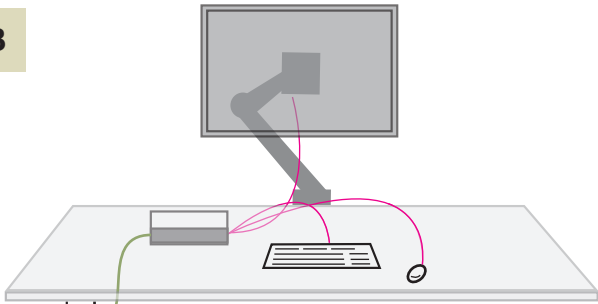
PRODUCTS

1a 430-WA34(W) LIFTHOLDER LAPTOP HOLDER, (WHITE)

2a 431-LU40(W) PORT REPLICATOR HOLDER (WHITE)

3 935-PD10(W) POWERDOT INCL. CABLE-THROUGHS (WHITE)

B



EVERYTHING UNDER THE TABLE

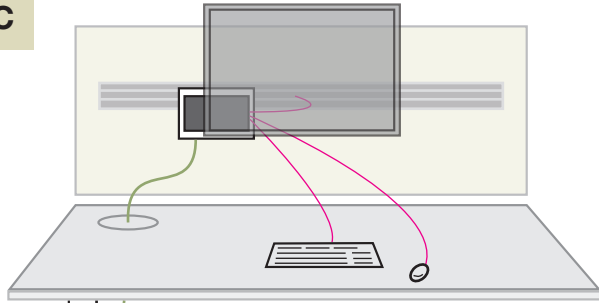
Stylish, hidden solution for those who do not need to access the port replicator in everyday life.

PRODUCTS

1a 430-WA34(W) LIFTHOLDER LAPTOP HOLDER, (WHITE)

2a 431-LU40(W) PORT REPLICATOR HOLDER (WHITE)

C



HIDE AWAY THE CABLES BEHIND THE MONITOR

Keep your computer neatly under the table, your port replicator will hide nicely behind your monitor. You place the holder in the appropriate position.

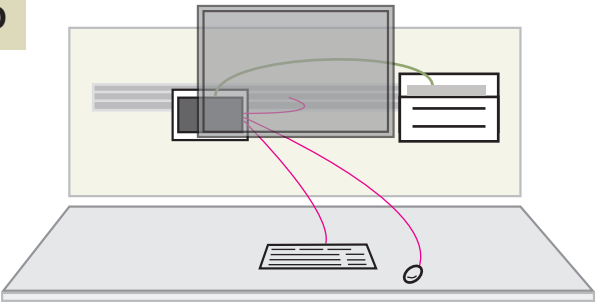
PRODUCTS

1a 430-WA34(W) LIFTHOLDER LAPTOP HOLDER, (WHITE)

2b 436-C140(W) PORT REPLICATOR HOLDER (WHITE)

3 935-PD10(W) POWERDOT INCL. CABLE-THROUGHS (WHITE)

D



EVERYTHING ABOVE THE TABLE


A true clear-desk solution, stylish, still practical as the laptop holder is extremely accessible.

PRODUCTS


1b 436-C130(W) LAPTOP POCKET FOR CONCEPTUM (WHITE)

2b 436-C140(W) PORT REPLICATOR HOLDER (WHITE)

COMPUTER HOLDERS




1a




1b

PORT REPLICATOR HOLDERS




2a



2b

CABLE MANAGEMENT



3

As an option a USB-C port can be used

NOTE! We recommend port replicator OCHNO Power Desktop, see page 37.





LAPTOP COMPUTER HOLDERS

Since the desks get smaller and smaller. Why let the computer own half of your desk space? Free up space with any of our intelligent computer holders.

COMPUTER HOLDER **LIFTLAP**

An ingenious patented and flexible design that stores your laptop horizontally or vertically beneath the desk. 360° rotatable, and can be folded vertically 90° for optimal space-saving. LiftLap can also be supplemented with a LiftSystem rail for sliding. Suitable for both desktop and laptop computers giving you two functions in one and the same holder. Therefore avoiding unnecessary costs if you change to another type of computer in the future. Complement with LiftSystem's patented clasp strap (part no. 427-CS06) for stable assembly.

- 431-LU20W

431-LU20

431-LU20B
- LIFTLAP, WHITE

■ LIFTLAP, SILVER

■ LIFTLAP, BLACK
- 431-LU30

■ LIFTUP XXL, SILVER
- DIMENSION PLATFORM 566 X 380 MM

DIMENSION PLATFORM 370 X 320 MM,
HEIGHT IN DOWN POSITION 570 MM,
ROTATES 360°

ACCESSORIES: SEE NEXT PAGE



LIFTHOLDER

A practical and flexible holder for your laptop, where the laptop is placed in a pocket under the table. Can be advantageously complemented with LiftSopi Recycling System for multi-functionality.

Comes with pre-installed pads for a softer bearing surface, and LiftSopi Multi-Cradle.



- 430-WA34W

430-WA34

430-WA34B
- LIFTHOLDER, WHITE

■ LIFTHOLDER, SILVER

■ LIFTHOLDER, BLACK
- HEIGHT: 310 MM WIDTH: 255 MM

CONCEPTUM **LAPTOP POCKET**

For smaller laptops and notebooks.



- 436-C130W

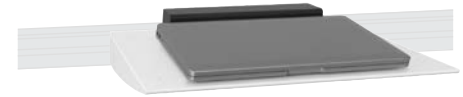
436-C103A
- LAPTOP POCKET, WHITE

■ LAPTOP POCKET, SILVER
- FITS COMPUTER MAX 30 MM

DIMENSIONS 270 x 255 x 200 MM

CONCEPTUM **LAPTOP SHELF**

LapTop shelf with cable feedthroughs and perforated shelf for optimal cooling of CPU.



- 436-C105W

436-C105A

436-C107W

436-C107A
- LAPTOP SHELF, 390X320, WHITE

■ LAPTOP SHELF, 390X320, SILVER

□ LAPTOP SHELF, 400X400, WHITE

■ LAPTOP SHELF, 400X400, SILVER

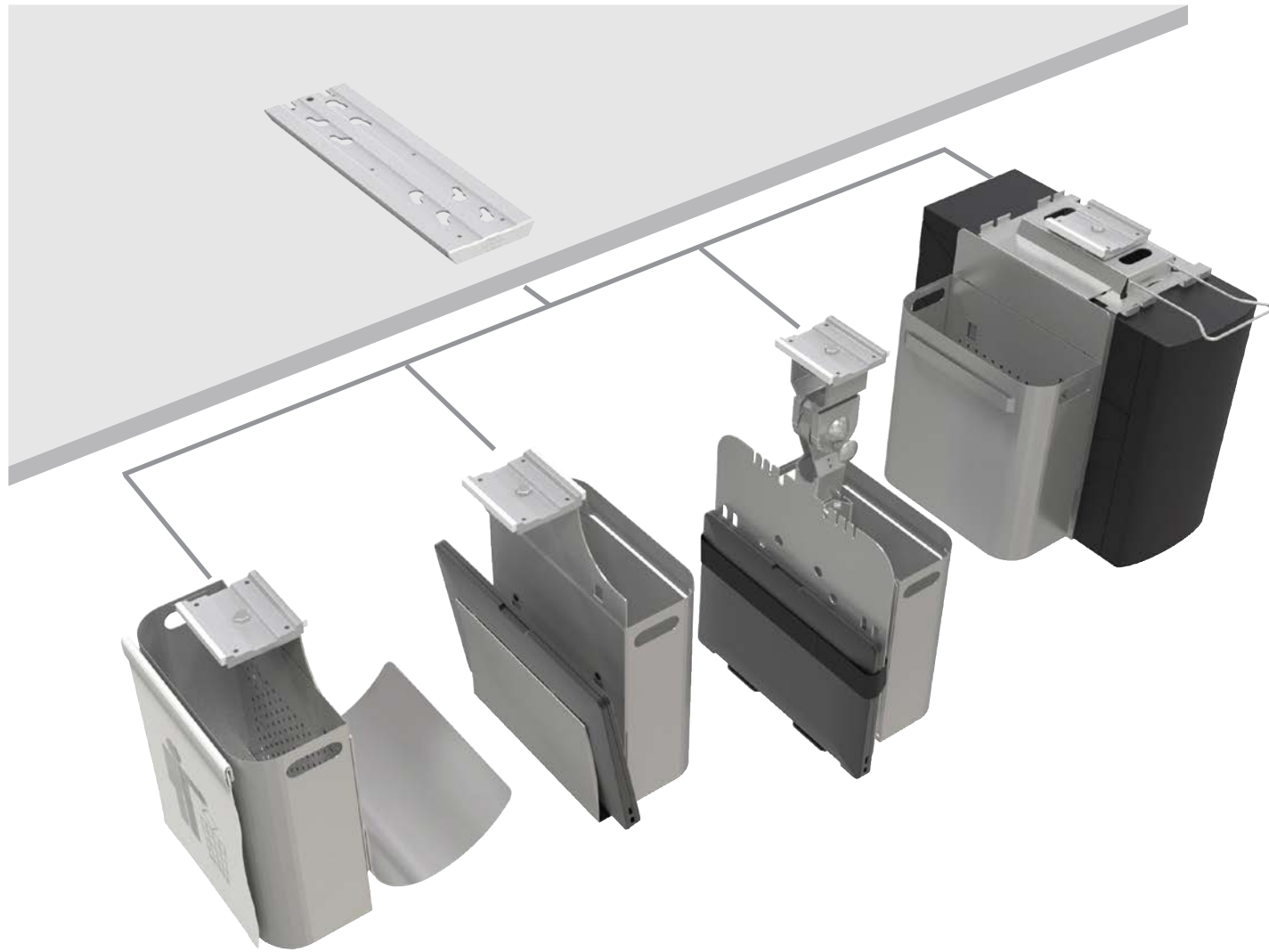


LIFTSYSTEM CONCEPT

Liftsystem is a complete concept made to create a more humane working environment at your desk, without compromising functionality or performance.

Put together the solution you need with a variety of modules, and simply slide it onto the mounted rail underneath your desk. These can easily be interchanged if different features are needed.

MODULES - CHOOSE UNITS NEEDED FOR THE BEST SOLUTION!



PAPER- & RECYCLING SYSTEM
LIFTSOPI

ACCESSORIES:
HANG-ON WASTE SACK
EXTRA WASTE BIN
EXTRA SHELF

LAPTOP HOLDER
LIFTHOLDER

ACCESSORIES:
INTEGRATED WASTE BIN
HANG-ON WASTE SACK

LAPTOP HOLDER
LIFTLAP

ACCESSORIES:
MULTI CRADLE
INTEGRATED WASTE BIN
HANG-ON WASTE SACK

COMPUTER HOLDER
LIFTFLEX

ACCESSORIES:
MULTI MODULE
INTEGRATED WASTE BIN
HANG-ON WASTE SACK
EXTRA SHELF

ONE TRACK... MANY OPPORTUNITIES



- 430-WA13 ■ RAIL INCL. PIN-LOCK, 300 MM, SILVER
- 430-WA11 ■ RAIL INCL. PIN-LOCK, 400 MM, SILVER
- 430-WA16 ■ RAIL INCL. PIN-LOCK, 600 MM, SILVER

ALL PRODUCTS CAN ALSO BE SECURED WITHOUT RAIL

LIFTLAP



- 431-LU20W □ LIFTLAP, WHITE
- 431-LU20 ■ LIFTLAP, SILVER
- 431-LU20B ■ LIFTLAP, BLACK
- ELASTIC STRAP INCLUDED
- HEIGHT: 550 MM WIDTH: 320 MM

ACCESSORIES



- 430-WA32W □ SOPI FOR LIFTLAP, WHITE
- 430-WA32 ■ SOPI FOR LIFTLAP, SILVER
- 430-WA32B ■ SOPI FOR LIFTLAP, BLACK
- HEIGHT: 275 MM WIDTH: 255 MM



- 427-CS06 ■ STRAPS FOR DESKTOP COMPUTER
- LENGTH STRAP BELT 1500 MM

LIFTFLEX



- 427-CS27E ■ LIFTFLEX
- 427-CS27 ■ LIFTFLEX WITH RAIL 400 MM, SILVER

ACCESSORIES



- 430-WA37W □ SOPI FOR LIFTFLEX, WHITE
- 430-WA37 ■ SOPI FOR LIFTFLEX, SILVER
- 430-WA37B ■ SOPI FPR LIFTFLEX, BLACK
- HEIGHT: 310 MM WIDTH: 255 MM



- 430-WA12 ■ SHELF, SILVER

LIFTSOPI



- 430-WA30W □ LIFTSOPI, WHITE
- 430-WA30 ■ LIFTSOPI, SILVER
- 430-WA30B ■ LIFTSOPI, BLACK
- HEIGHT: 321 MM WIDTH: 255 MM

ACCESSORIES



- 430-WA31W □ SOPI WASTE BIN, WHITE
- 430-WA31 ■ SOPI WASTE BIN, SILVER
- 430-WA31B ■ SOPI WASTE BIN, BLACK
- HEIGHT: 275 MM WIDTH: 255 MM



- 430-SOPI ■ SOPI WASTE BAG SET 25 X 100 PCS
- WORKS WITH ALL OUR BINS

LIFTHOLDER



- 430-WA34W □ LIFTHOLDER, WHITE
- 430-WA34 ■ LIFTHOLDER, SILVER
- 430-WA34B ■ LIFTHOLDER, BLACK
- HEIGHT: 310 MM WIDTH: 255 MM

ACCESSORIES



- 430-WA33W □ LIFTHOLDER SHELF, WHITE
- 430-WA33 ■ LIFTHOLDER SHELF, SILVER
- 430-WA33B ■ LIFTHOLDER SHELF, BLACK
- HEIGHT: 260 MM WIDTH: 255 MM



- 430-WA31W □ WASTE BIN, WHITE
- 430-WA31 ■ WASTE BIN, SILVER
- 430-WA31B ■ WASTE BIN, BLACK
- LENGTH: 275 MM WIDTH: 255 MM

COMPUTER
HOLDERS



LAPTOP BOX **SAFETY**

A lockable laptop box with integrated wrist support and cable entry at the rear panel. A robust, space-saving box which provides excellent theft-protection.

435-ND01 SAFETY LAPTOP BOX, SILVER
INNER DIMENSIONS: WIDTH 370,
DEPTH 350 MM, HEIGHT 45 MM.
KEYLOCK INCLUDED



LAPTOP BOX **SAFETY**

Patented lockable Laptop box for assembly under the desktop. Suits most existing laptop docking stations on the market. The lockable side piece can be opened to a horizontal position for easy docking.

428-LU50 SAFETY VERTICAL BOX, GREY
KEYLOCK INCLUDED



COMPUTER HOLDER **LIFTFIX**

For fixed mounting of vertical or horizontal computers under the tabletop. A patented design with a unique strap catch that is both elegant and extremely rigid.

427-CS17 ■ LIFTFIX, SILVER
427-CS18 ■ LIFTFIX, BLACK

HOLDS COMPUTER 60 MM FROM DESK
MAX COMPUTER CIRCUMFERENCE:1500 MM



COMPUTER HOLDER **LIFTFLEX**

Gives easy access to both horizontally and vertically placed computers. May for expanded accessibility also be supplemented with Liftsystem sliding track, which means simple take-down of the CPU holder on the floor. Patented strap catch for extremely firm and secure positioning. Fits computers with up to 1500 mm circumference.

427-CS27E ■ LIFTFLEX, SILVER
427-CS27 ■ LIFTFLEX, SILVER
INCL. 400 MM RAIL



LAPTOP STAND **TURN-O-FLEX**

A practical laptop tripod, which raises the monitor of laptop computers to a comfortable working height. Adjustable to six alternative positions for the desired angle and work-height; it also has a unique turntable (360°) under the support.

426-5710 TURN-O-FLEX, SILVER
DIMENSIONS: WIDTH 305 MM, LENGTH 240 MM

WORK STATION **TERMIFIX**

A rail system for permanent wall assembly, consisting of two rail consoles.

The upper **TERMIFIX 1** is a complete work station with keyboard platform and monitor bracket. The lower **TERMIFIX 2** rail console has an adjustable CPU holder. Can be adjusted vertically to the required height.

TERMIFIX 1

438-KA1C TERMIFIX 1

WALL RAIL, MONITOR BRACKET VESA 75/100, KEYBOARD HOLDER WITH MOUSE TABLE. RAIL LENGTH 820 MM, WIDTH 116 MM.



TERMIFIX 2

438-CS15 TERMIFIX 2

COMPLETE WALL RAIL WITH CPU-HOLDER.
RAIL LENGTH 820 MM, WIDTH 116 MM.



COMPUTER HOLDER **QUICKCLICK**

Elegant design for vertical assembly of small, medium and slim computers. QuickClick is adjusted very easily using the quick-lock "Ratchet Control", for an absolute secure locking.

427-1203W □ QUICKCLICK, WHITE
427-1203 ■ QUICKCLICK, SILVER
427-1203B ■ QUICKCLICK, BLACK

DIM.: WIDTH MIN/MAX 40-125 / (+60) 185 MM,
HEIGHT MIN/MAX 225-435 MM.



COMPUTER CARRIER **CADDY**

A good computer carrier should have a low centre of gravity and be fitted with wheels. This facilitates cleaning work as moving it can be accomplished without having to do heavy lifts.

427-CS02G CADDY COMPUTER CARRIER.

DELIVERED WITH LOCKABLE WHEELS AND ANTI-SLIP PADS.
ADJUSTABLE WIDTH 80-252 MM

ERGONOMICS



477-MPU1 ERGOZONE WORKPLACE MAT
GREY POLYURETHANE.
DIMENSIONS 45 x 60 CM



WORKPLACE MAT ERGOZONE
A soft shock-absorbing workplace mat, which significantly reduces the load on the feet. Ergozone is available in homogeneous soft polyurethane, and as a textile mat with an underlying core of polyurethane.



477-MTX1 ERGOZONE WORKPLACE MAT
GREY TEXTILE /POLYURETHANE.
DIMENSIONS 50 x 70 CM



642-3121 FOOTMASTER
STABLE FOOT PLATE. ADJUSTABLE WITH THE FEET.
WIDTH 475 MM, DEPTH 300 MM, HEIGHT 50-90 MM.

RELAXING FOOT RESTS
A good foot rest must support the feet in a natural position. With the right support and a flexible working position you avoid the front edge of the seat to put pressure on your thighs.



476-0027 MCKENZIE BACK SUPPORT, BLACK
COMES WITH QUICK-LOCK AND ZIPPER.





SADDLE CHAIR JOCKEY
Jockey Comfort with a softly padded ergo seat provides exceptional sitting ergonomics. Jockey “tricks” your body into believing that it is standing. This gives the hip an open sitting angle which allows a back posture with a retained inward curve of the lower back. Increased blood circulation is also achieved compared with the traditional sitting position since the pressure against the back of the knees and underside of the thighs is eliminated.

475-7246 JOCKEY COMFORT, BLACK

ACCESSORIES
475-0001 FOOT RING



DOCUMENT HOLDER
A perfect aid for those who work daily with paper documents

452-0081 EUROCEPT, OFF-WHITE
WIDTH 375 MM, HEIGHT 265 MM.

HUMAN INTERFACE & ERGONOMIC SUPPORT



ERGOSLIDER PLUS+

Ergoslider Plus+ has a low and stylish design. This in order to give the user absolute comfort, a preventative natural position, without tension during daily computer work. All key functions are centred on the central panel, for natural use of your keyboard.

The pleasantly soft wrist support provides a nice rest. This is removable and can, if necessary, be supplemented with a form adapted support, or replaced entirely with a wider extended wrist support.

440-E801 ■ ERGOSLIDER PLUS+, BLACK
DIMENSION LENGTH 390 MM, WIDTH 105 MM.

ACCESSORIES ERGOSLIDER PLUS+

440-E815 ■ FORM ADAPTED ARM SUPPORT, BLACK
440-EE03 ■ ERGOSLIDER EXTENDED, BLACK



440-E815



440-EE03

GRIP MOUSE WITH THE RIGHT FEELING

Wow Grip Mouse Deluxe puts your hand in a natural and restful position like a “handshake”. Design with textured surface, gives you a nice feeling of steady grip. A 5-button ergonomic mouse with adjustable sensitivity / dpi and a removable “surfing support” for the wrist.

440-W618 WOW GRIPMOUSE DELUXE, WIRED
440-W619 WOW GRIPMOUSE DELUXE, WIRELESS



WASHABLE SILICONE MOUSE

A 5-button optical mouse for tough environments. Completely enclosed in high-quality silicone offering unique properties that withstand both water and disinfection solvents. Also resistant to soap solutions, petroleum products and alcohol.

440-4M5W AHAA RESIMOUSE, WHITE



KEYBOARD AHAA PALM KEYBOARD

Ahaa Palm Keyboard lies firmly on the desk with a low design. This creates an ergonomically relaxing work position with the wrist held straight without tension. The wrist cushion provides comfortable support, which also can be folded onto the keyboard to act as a cover to protect against dirt and dust.

441-K205 AHAA PALM KEYBOARD
PLUG & PLAY. INCL. USB-HUB - 2 PORTS.

COMBI ARM SUPPORT

For use with both keyboard and mouse. Also fits concave shaped desktops, and may be positioned diagonally at 90 degree corners

459-4020 HANDY COMBI ARM SUPPORT, BLACK LYCRA
DIMENSIONS: WIDTH 670 MM, DEPTH 230 MM
459-3020 COLOUR: BLACK LEATHERETTE, OTHERWISE AS ABOVE.



459-4020

RELAXING ARM SUPPORT

Forearm Support for work at keyboards, can be adjusted in width and depth as required. A soft relaxing support in comfortable lycra.

459-3015 HANDY DUO COMBI ARM SUPPORT
DIMENSIONS: WIDTH 680-820 MM, DEPTH 240 MM.



RELAXING IN EVERY WAY

Soft and comfortable wrist support filled with high quality EnergyGel. Good support for the wrist without obstructing hand movement.

455-2416 WRIST SUPPORT, KEYBOARD COMFORT GEL
COLOUR: ANTHRACITE GREY.
DIMENSIONS: WIDTH 480 DEPTH 80 HEIGHT 20 MM



KEYBOARD EXTENSION MORESPACE

MoreSpace is a stable keyboard drawer on a glider for assembly below the desktop, creating free workspace. A practical and often natural choice for smaller worktables and customer counters. The keyboard tray is adjustable in height and angle for the absolutely best work position and has an integrated restful wrist support and mouse board to the right and left sides.

450-KA20 MORESPACE KEYBOARD & MOUSE BOARD, INCL. RAIL
DIMENSIONS: WIDTH 660 DEPTH 262 HEIGHT 0-142 MM.



KEYBOARD AHAA FLEXFOLD MIDI

Water and dirt proof flexible keyboard that allows for easy cleaning and storage. Flexfold is made of high quality silicone that can be rolled up and tucked away in a laptop bag, drawer or other small compartment.

441-426U AHAA FLEXFOLD MIDI
DIMENSION 402X130 MM.



MOUSE ARM SUPPORT

The wrist is held comfortably and without tension while working with your computer mouse.

459-4024 HANDY MOUSE ARM SUPPORT, BLACK LYCRA
DIMENSIONS: WIDTH 190 MM, DEPTH 225 MM.

PERFECT SUPPORT

Large work surface for the computer mouse and comfortable wrist support on EnergyGel.

455-2415 MOUSE PAD COMFORT GEL
COLOUR: ANTHRACITE GREY
DIMENSIONS: WIDTH 225
DEPTH 275 HEIGHT 20 MM.

STORAGE



FILE EXPANSION **MAPPI**

Pull file expander with ball-bearing guide rails are both natural and practical designs which allow the largest possible overview and accessibility to suspended file folders. Detachable file holders with a locking device in a table expansion for stable positioning. File expander fits most cabinet spaces. Mappi file expansion fits into cabinet spaces from 400 mm and wider.

- 435-4495 □ MAPPI FILE EXPANSION, WHITE
435-4491 ■ MAPPI FILE EXPANSION, SILVER
WIDTH 337 MM, DEPTH 302 MM.

ACCESSORIES

- 435-4492 MAPPI EXTRA WIDE CRADLE, SILVER
WIDTH 475 MM, DEPTH 302 MM.



PEN & GADGET BOX **STORE**

Elegant and rotatable nearby storage of pens, paper clips and other “everyday” office accessories, creating free workspace on the desktop. Store has built-in lock-brake in the closed position and smooth rotation.

- 435-4497 □ STORE, WHITE
435-4490 ■ STORE, SILVER
435-4489 ■ STORE, BLACK

• Ø 345 MM, WITH INTEGRATED TAPE HOLDER

